

(Optional) Android emulator setup

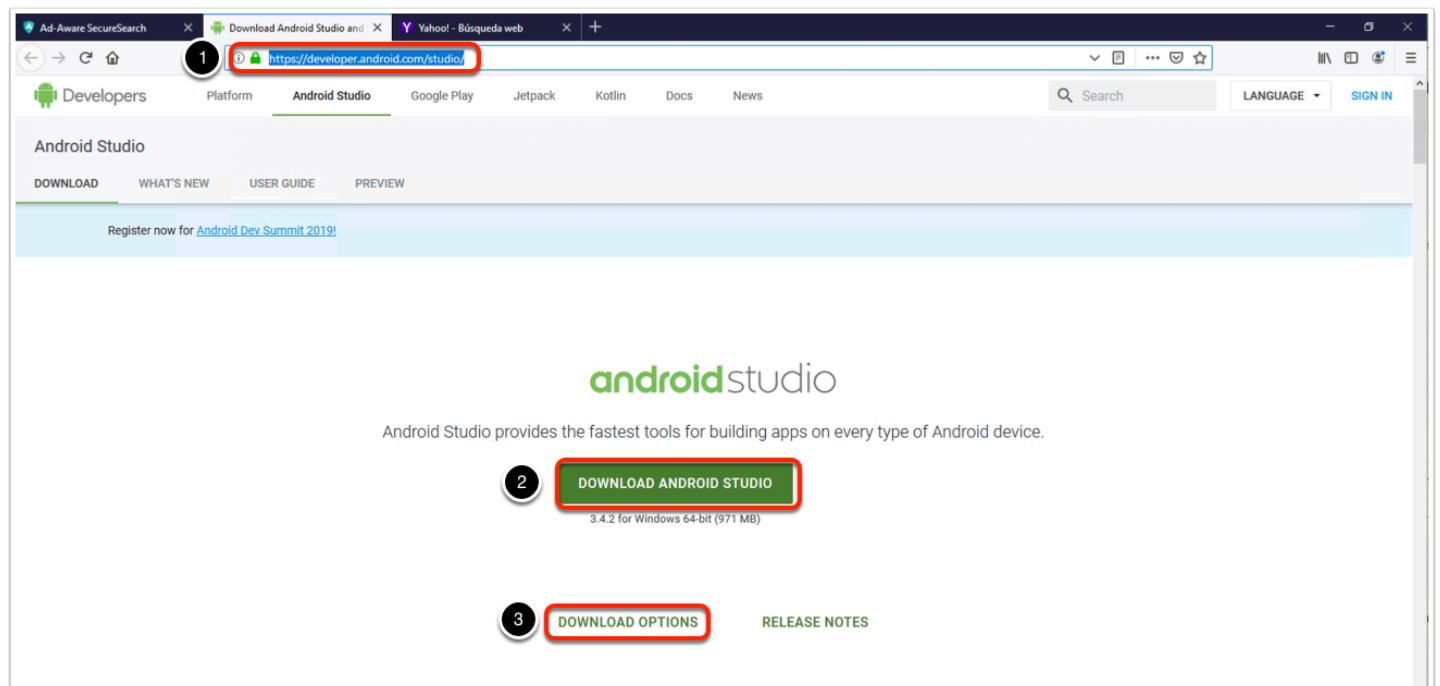
Introduction

If you don't have an android test device and you want to test the Device enrollment, android single sign on, and other android based labs, theres an emulator you can install in your laptop an follow along with the particular lab manual as you would do on a physical device. What follows is the installation instructions for the installation of such software.

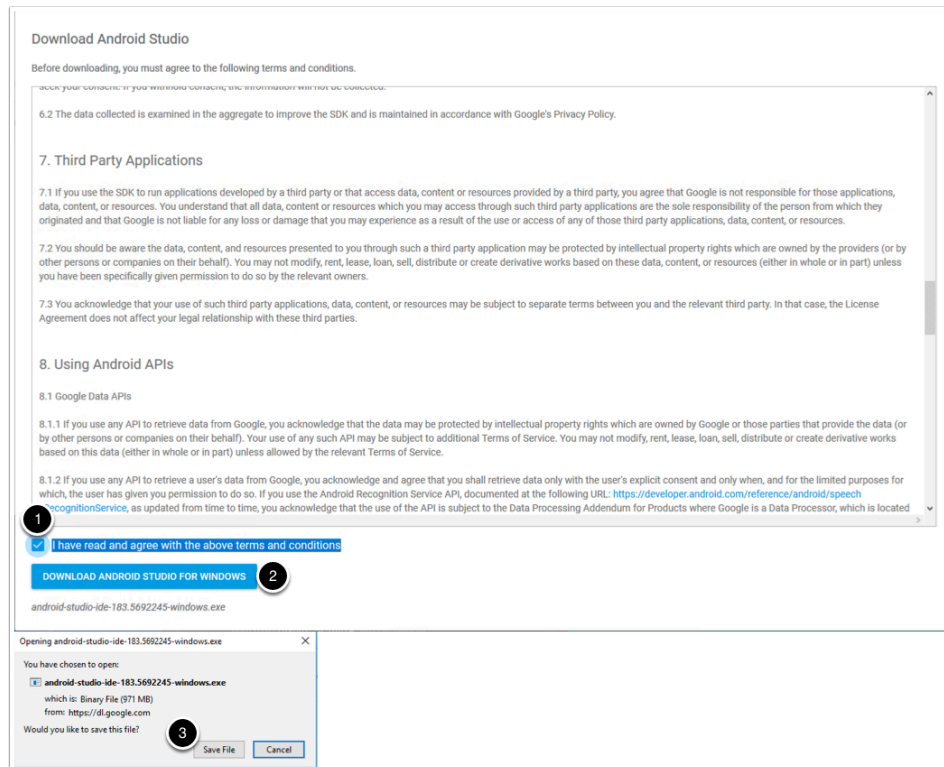
If something goes wrong and you want to start again with a fresh device, instructions are included for redeploying the os image.

downloading the installer

1. Go to <https://developer.android.com/studio/>
2. in the middle of your screen click on **Download Android Studio**
3. if the correct os version is not displaying click on **download options** and download the correct one

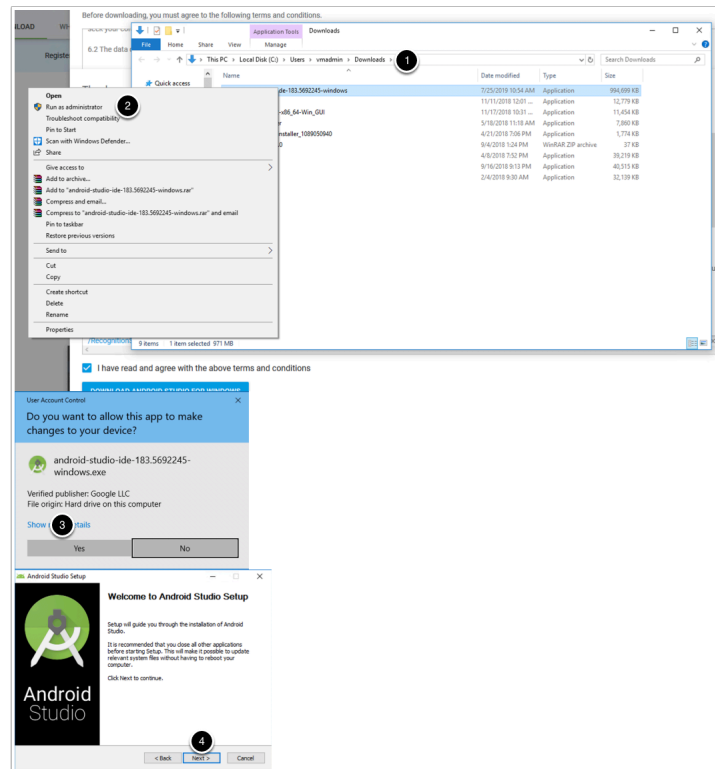


1. Check the box next to **I have read and agree with the above terms and conditions**
2. Click on **Download android Studio for your platform**
3. Click on **save file** when prompted

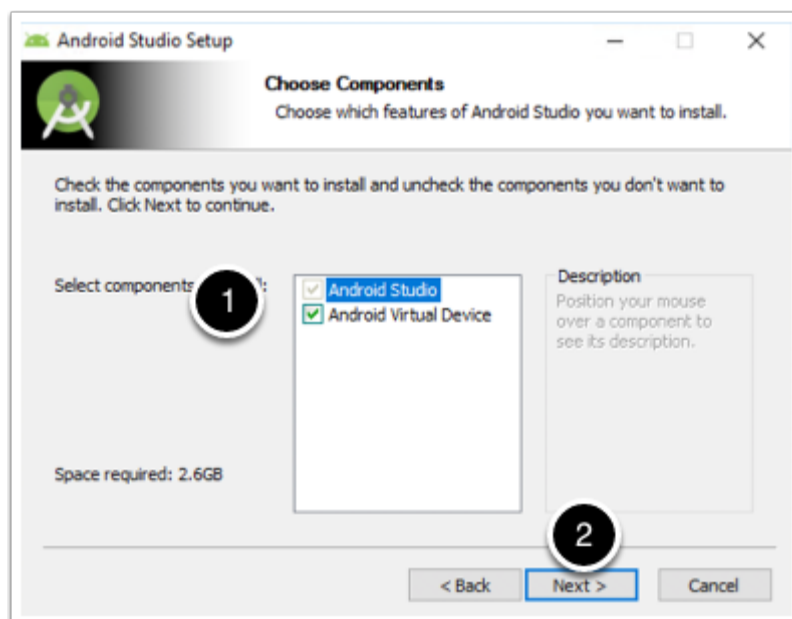


Windows installation

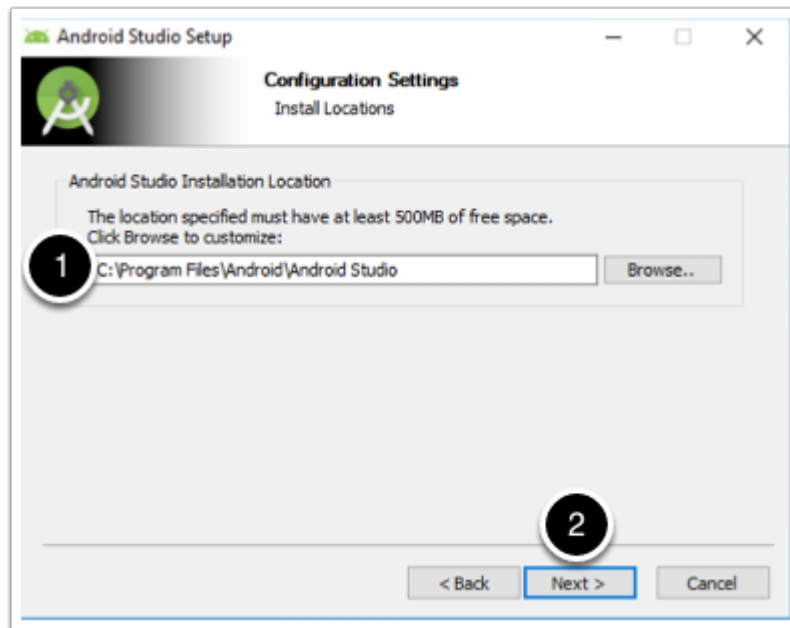
1. go to your downloads folder
2. right click on your recently downloaded file and click on **run as administrator**
3. click on **yes** to allow the installer to make changes to your machine
4. Click next on the welcome to android studio setup window



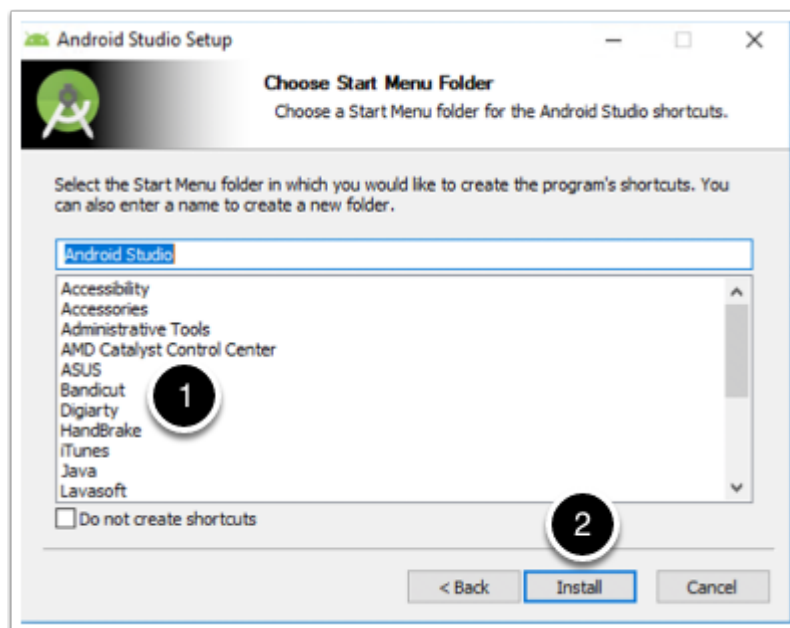
Make sure both **Android studio** and **android virtual device** are selected and click **next**



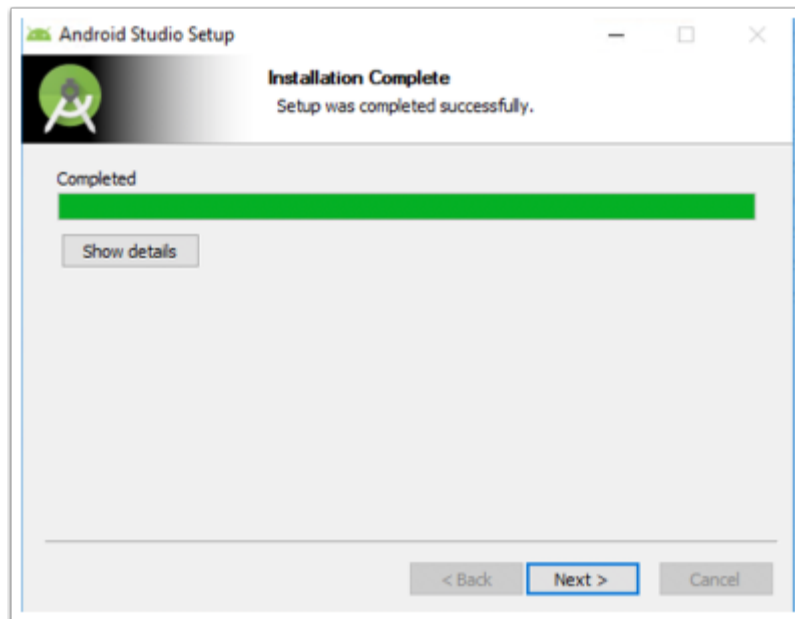
Select your installation location and click **next**



choose your start menu shortcut configuration and click **install**



on the installation complete window click **next**

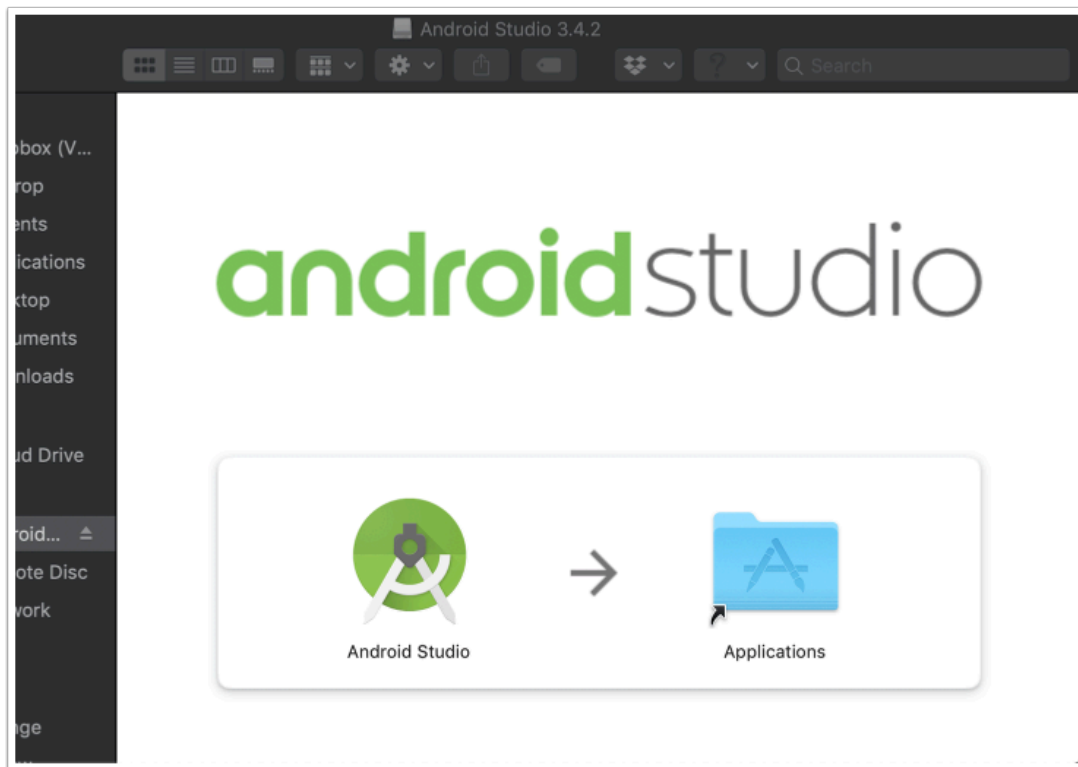


In the completing Android Studio Setup window check the **Start Android Studio** checkbox and click **finish**



Mac os installation

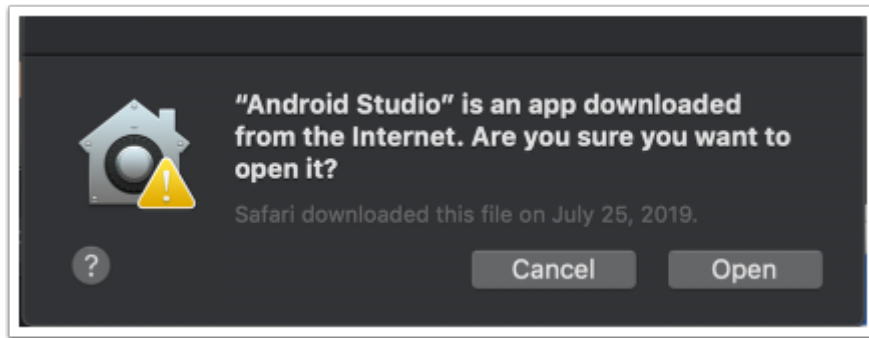
mount and open your downloaded dmg image. Drag the **Android studio** icon into the **Applications** folder.



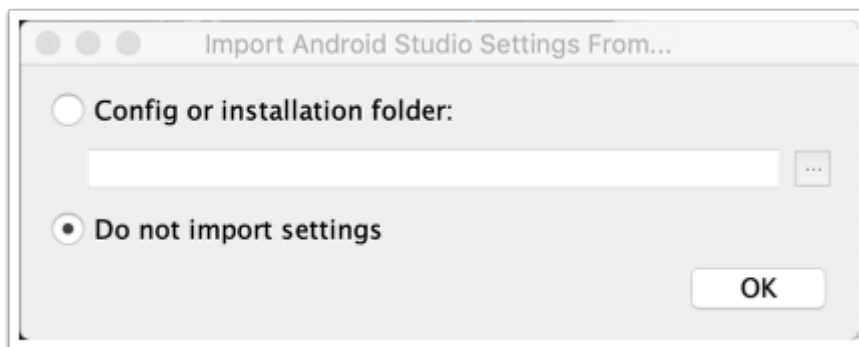
From your applications folder double click your **Android Studio** icon



Click on **Open** if you get a security prompt



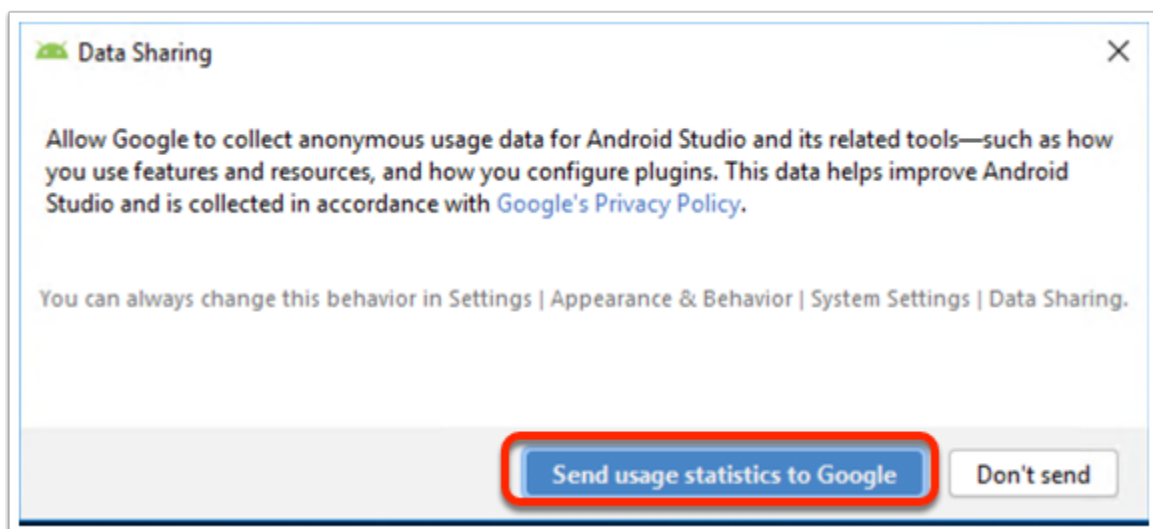
in the Import android Studio settings From.. window select **Do not import settings** and click **ok**



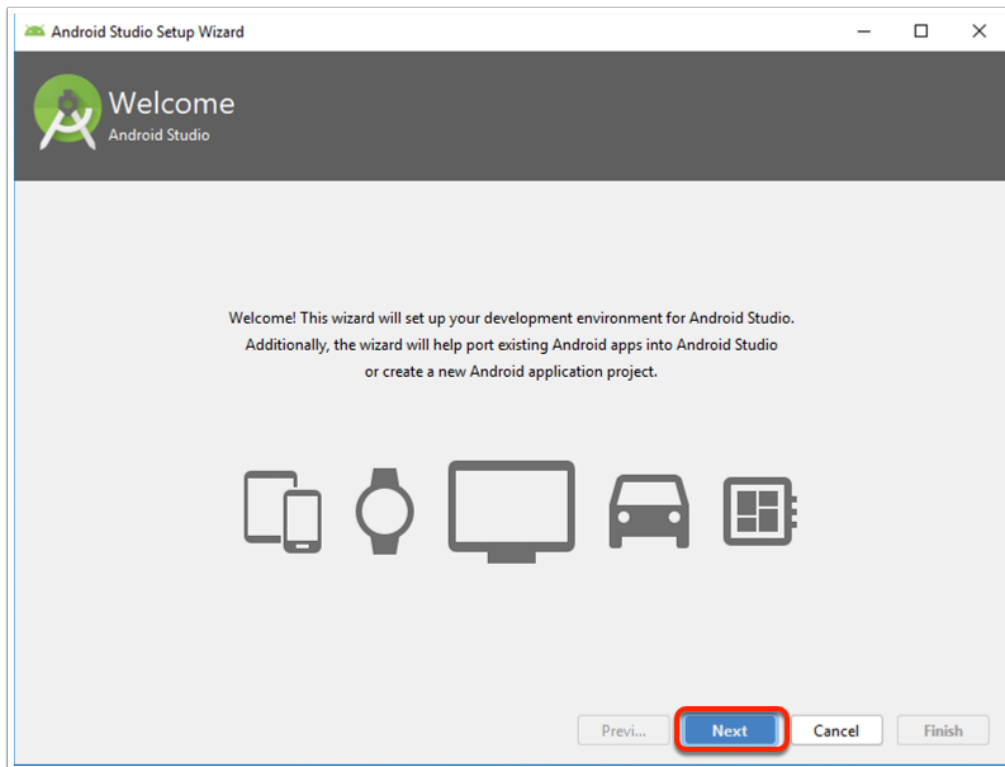
on the Android Setup Wizard, in the Welcome window click **Next**. From this point on you can follow the initial configuration steps, please ignore anything regarding the HAXM plugin as this has been already installed for you in the initial installation process.

Initial configuration

in the Data Sharing window click on **Send usage statistics to Google**

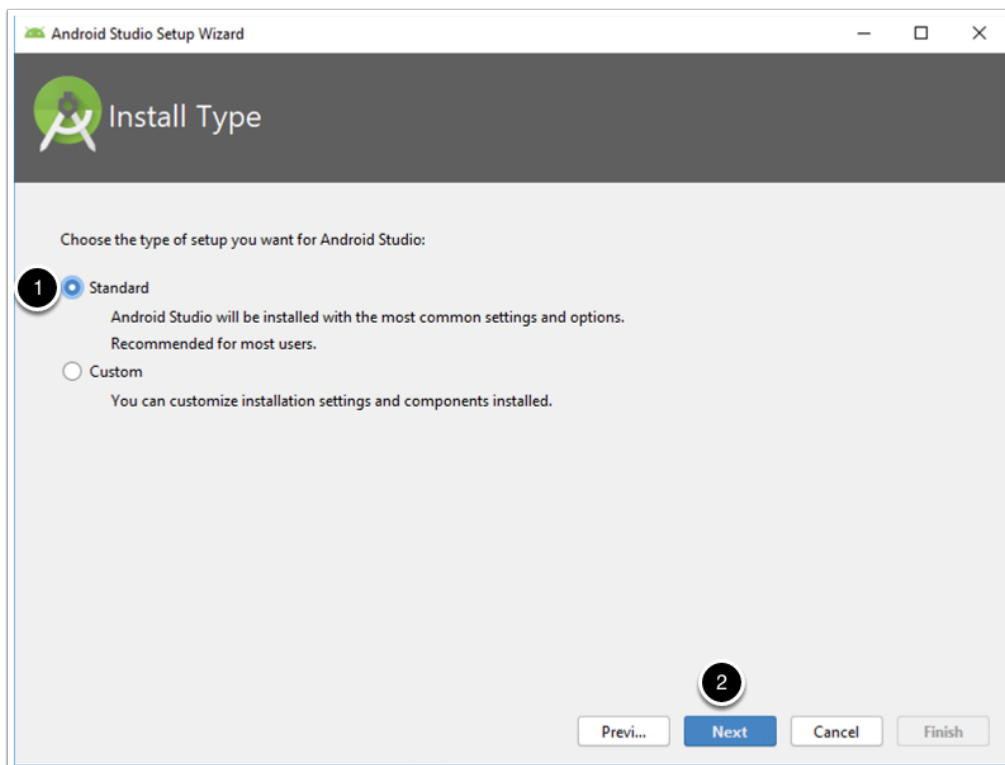


In the android Studio setup wizard, in the Welcome window click **Next**

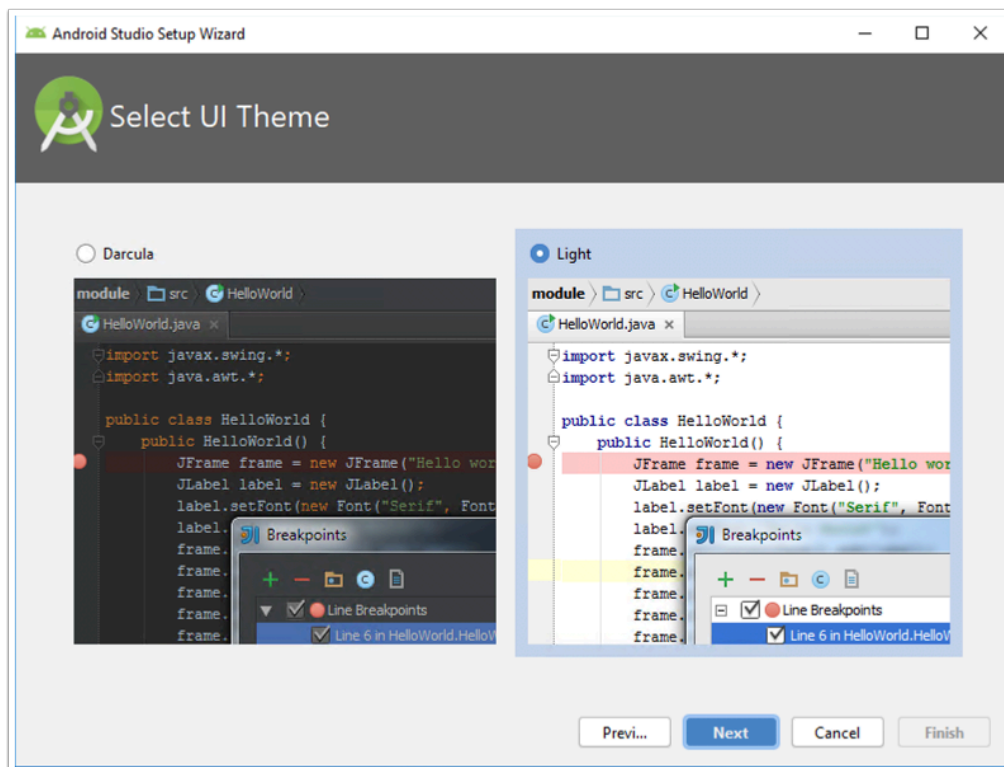


In the Android Studio Setup Wizard in the install type window

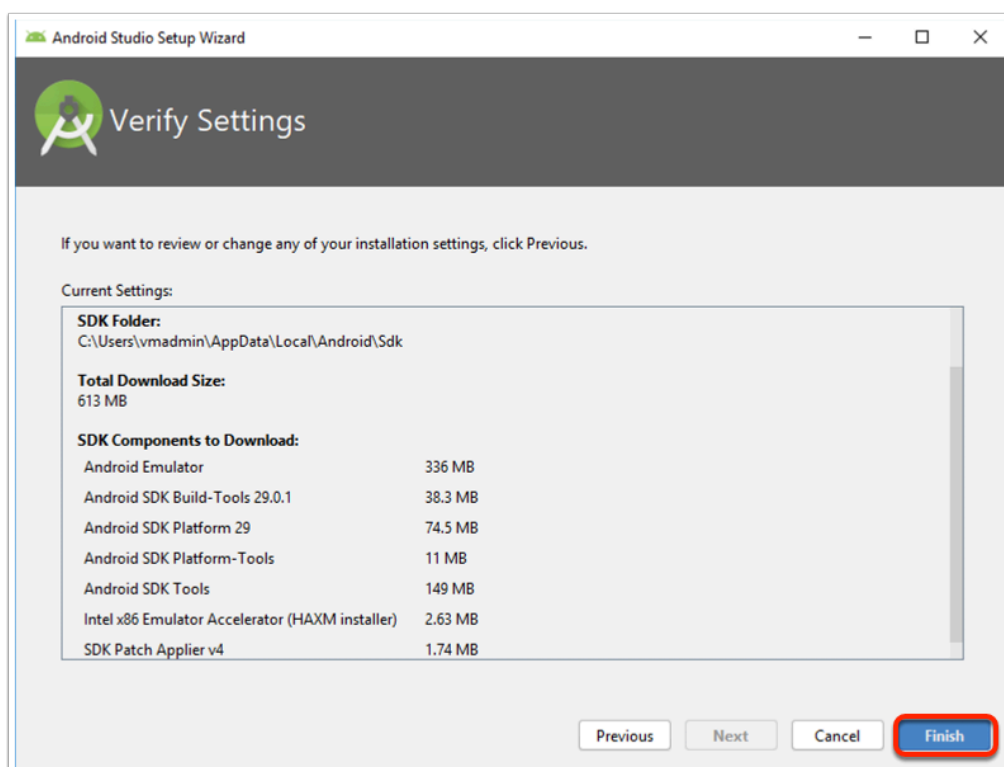
1. Make sure **Standard** setup radio button is selected
2. Click **Next**



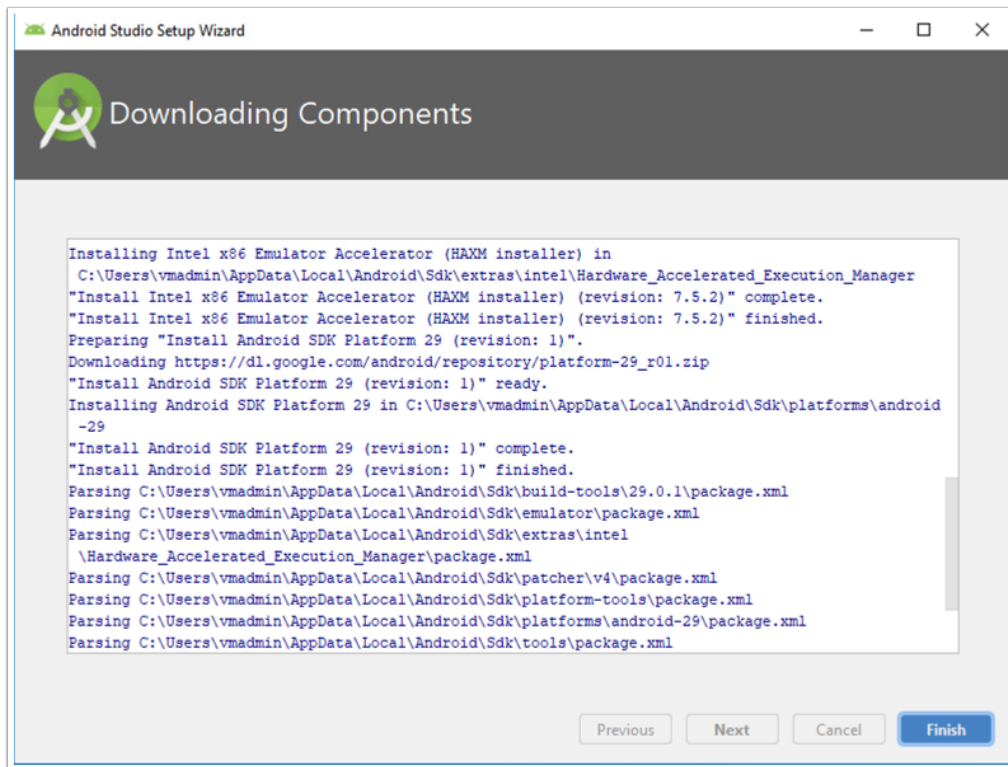
Choose your preferred UI theme and click **Next**



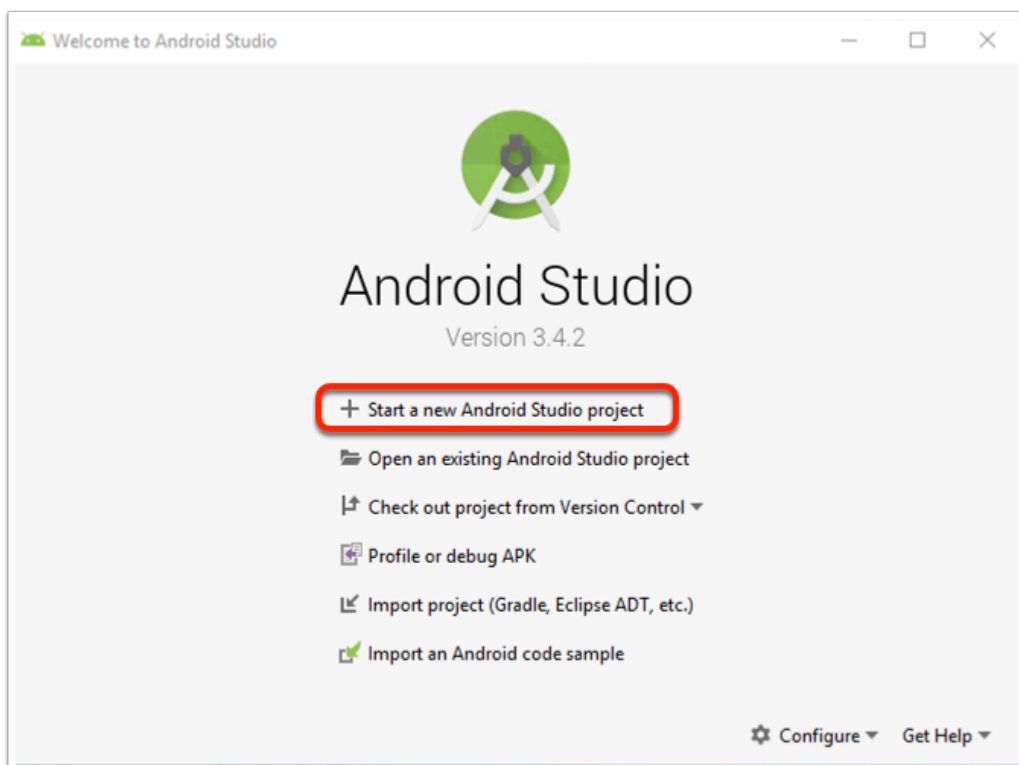
On the verify Settings window click **Finish**



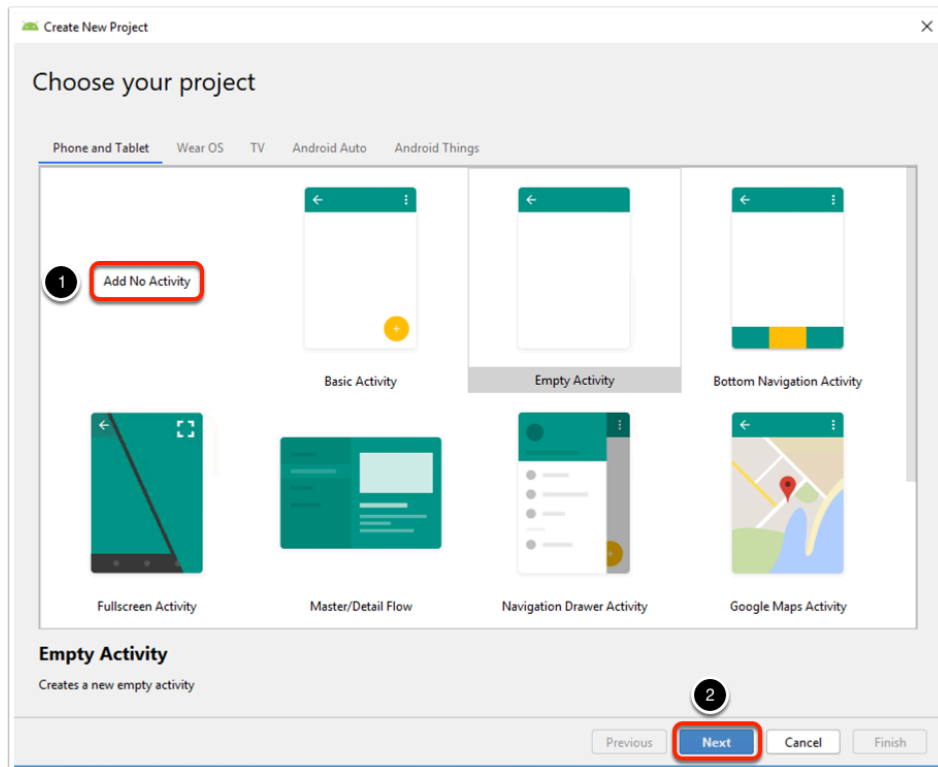
In the Downloading Components window click **Finish**



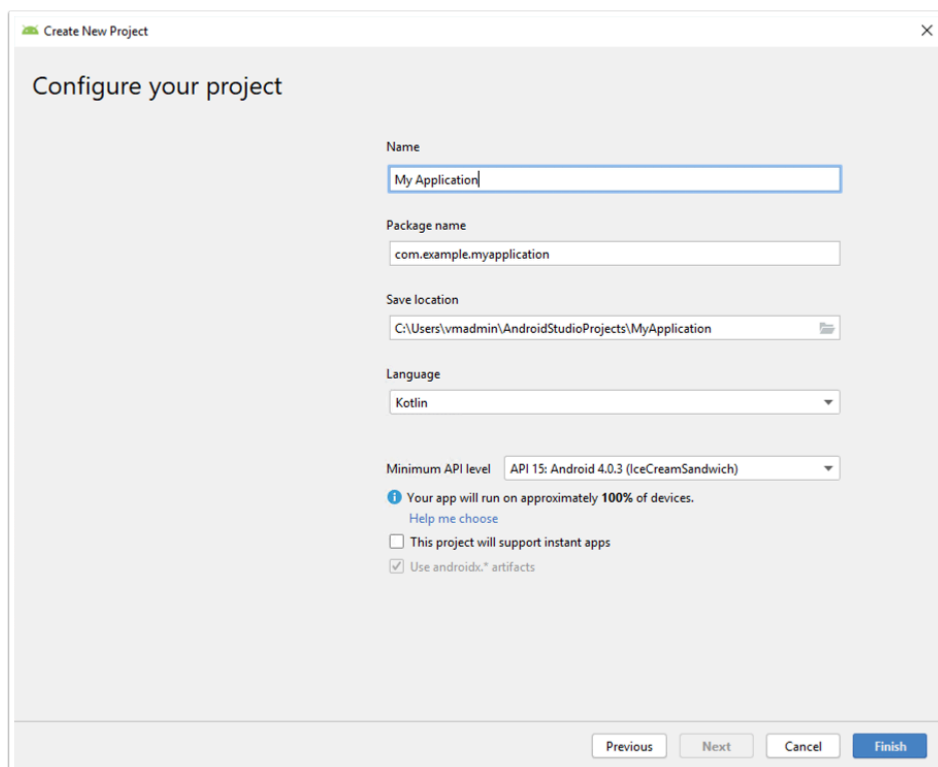
In the Welcome to android studio window click on **start a new android project**



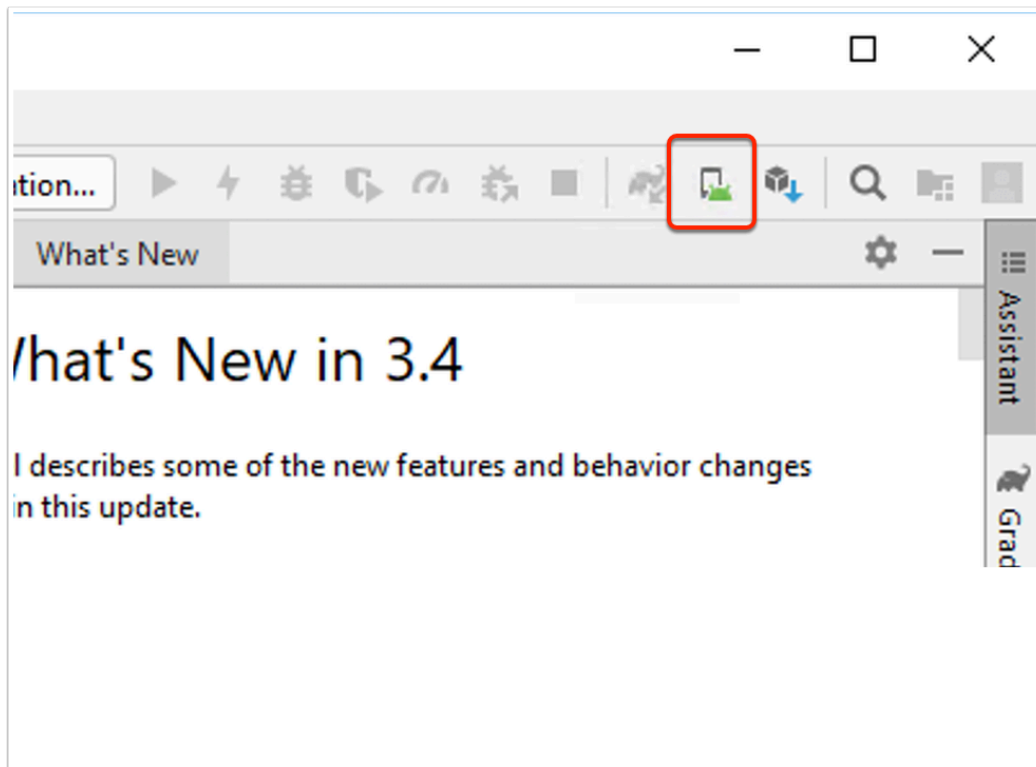
In the choose your project window, choose **add no activity** and click **Next**



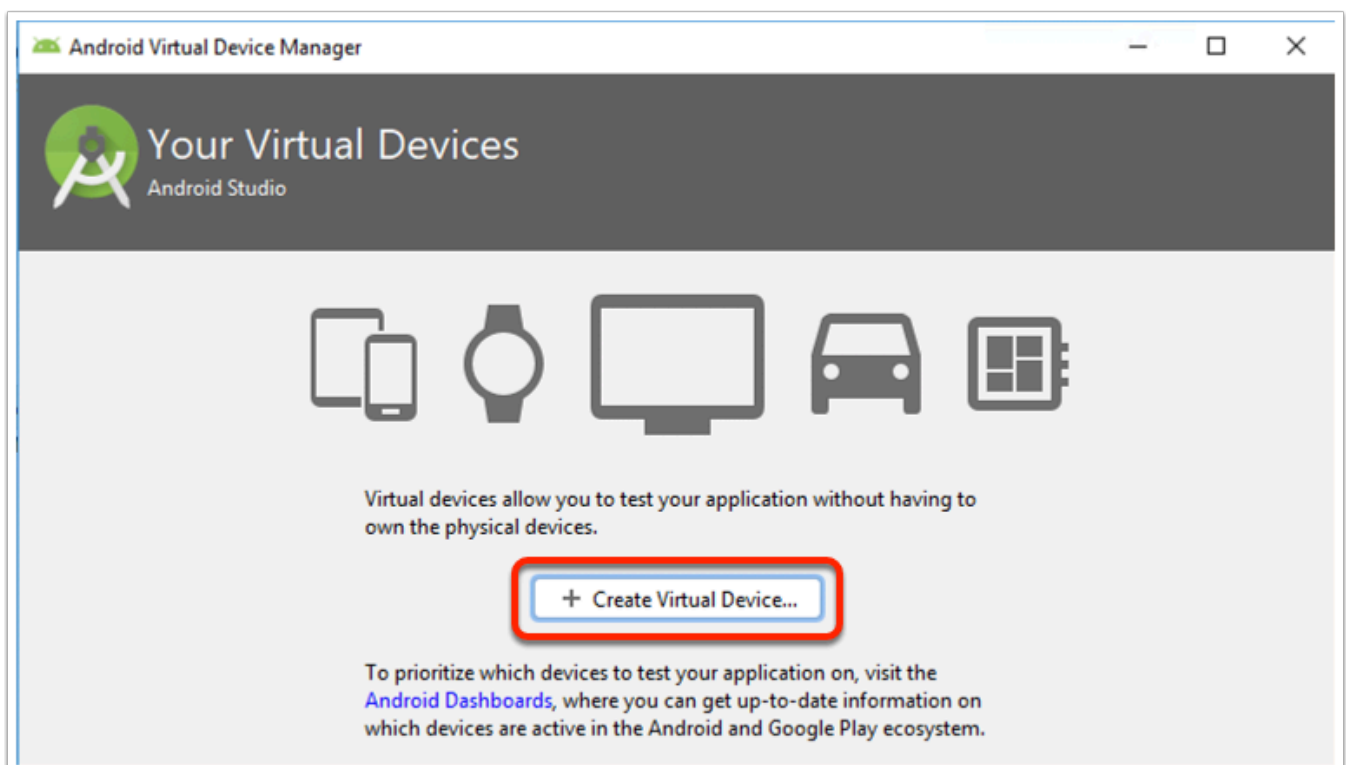
In the configure your project window leave the default settings and click **Finish**



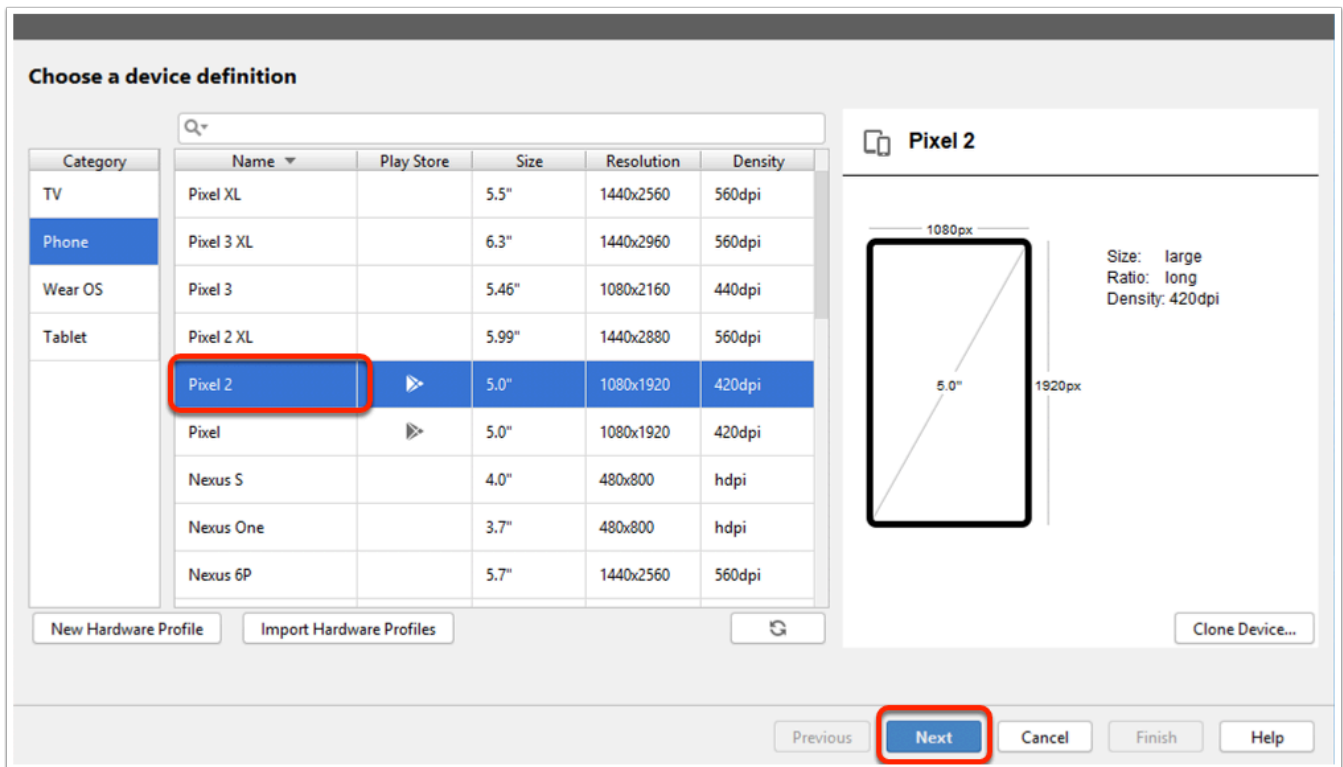
Click on the AVD Manager icon on the toolbar



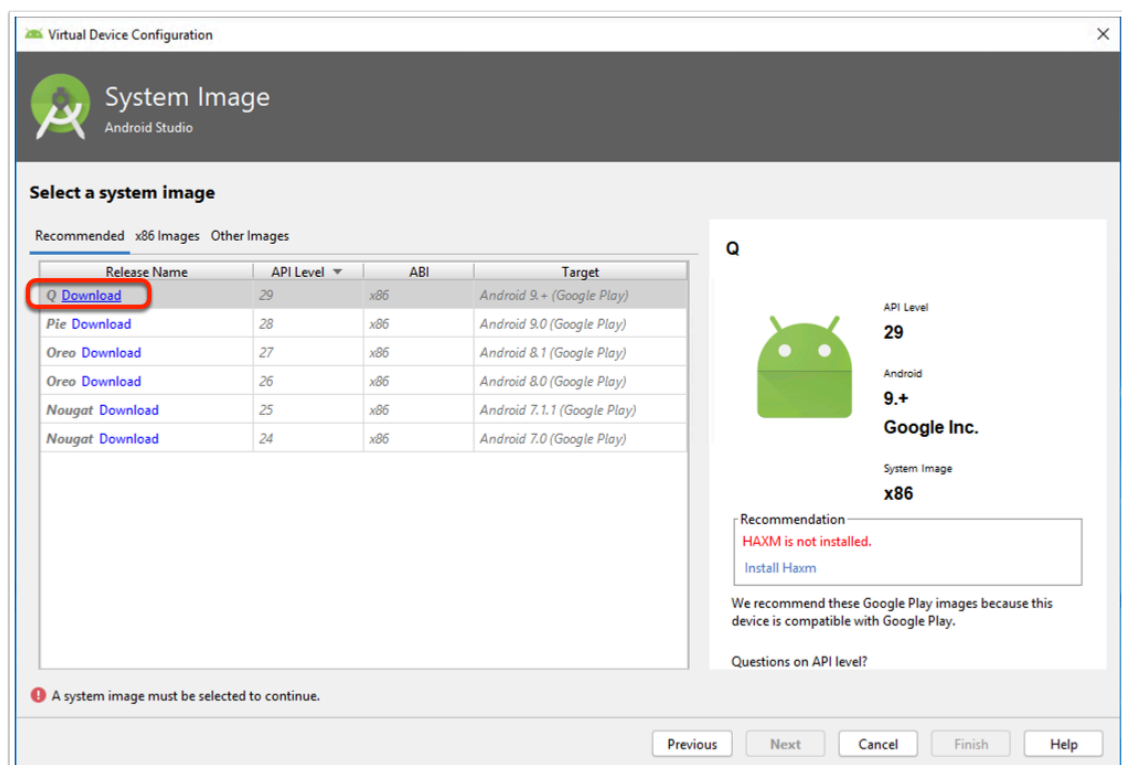
Click on **Create Virtual Device**



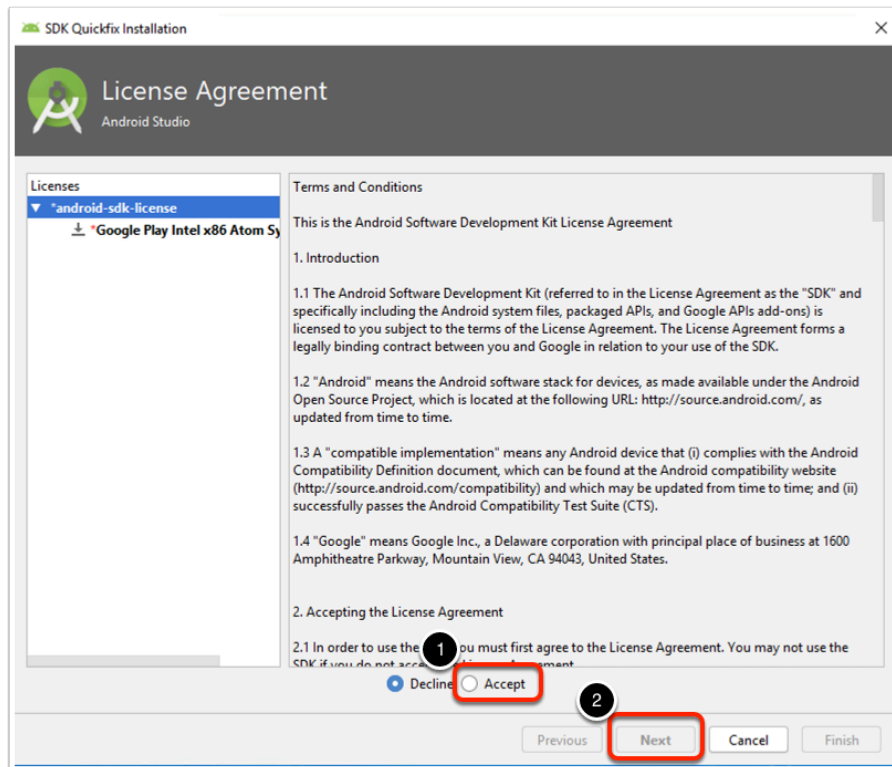
Select the **Pixel 2** Image marked with Play Store access and click **Next**



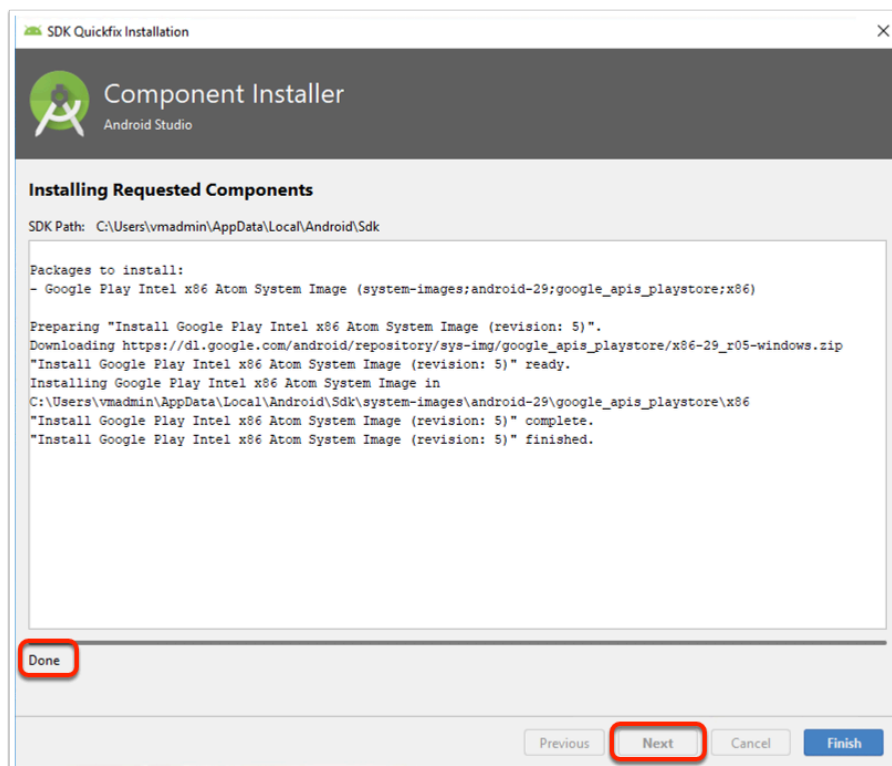
in the release name column click Download next to **Q**



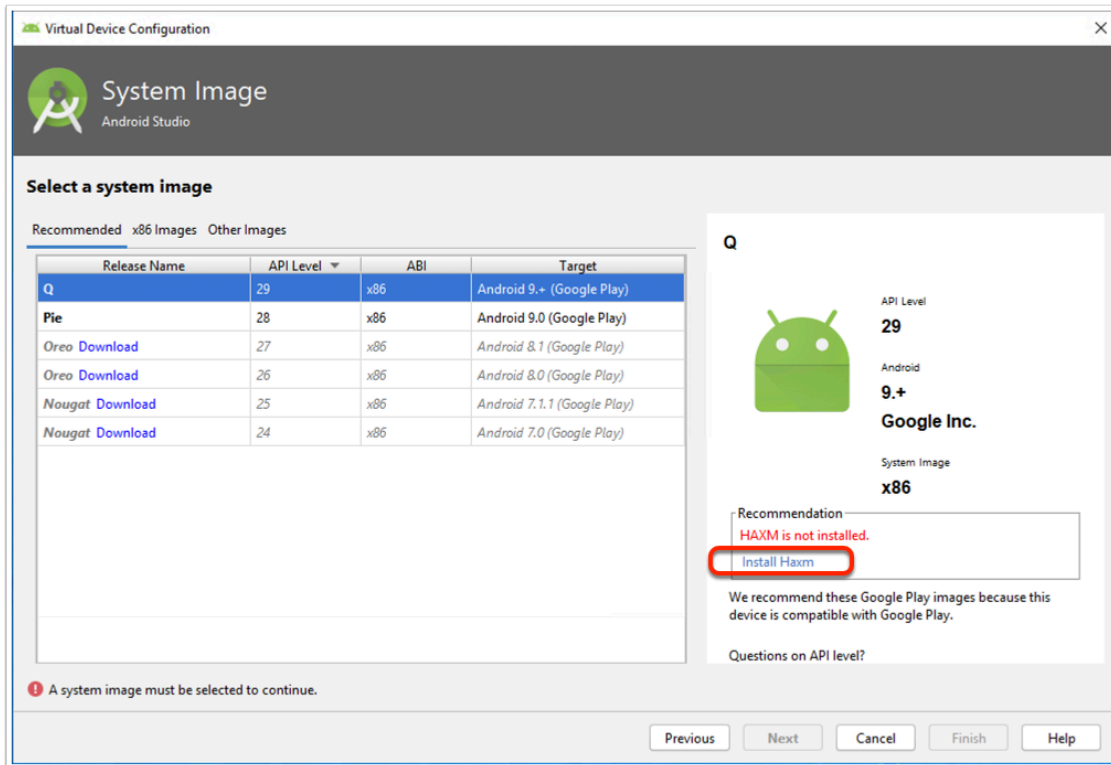
In the license agreement window select the radio button next to **I agree** and click **Next**



In the Installing Requested Components window Click **Next** when the progress bar shows DONE

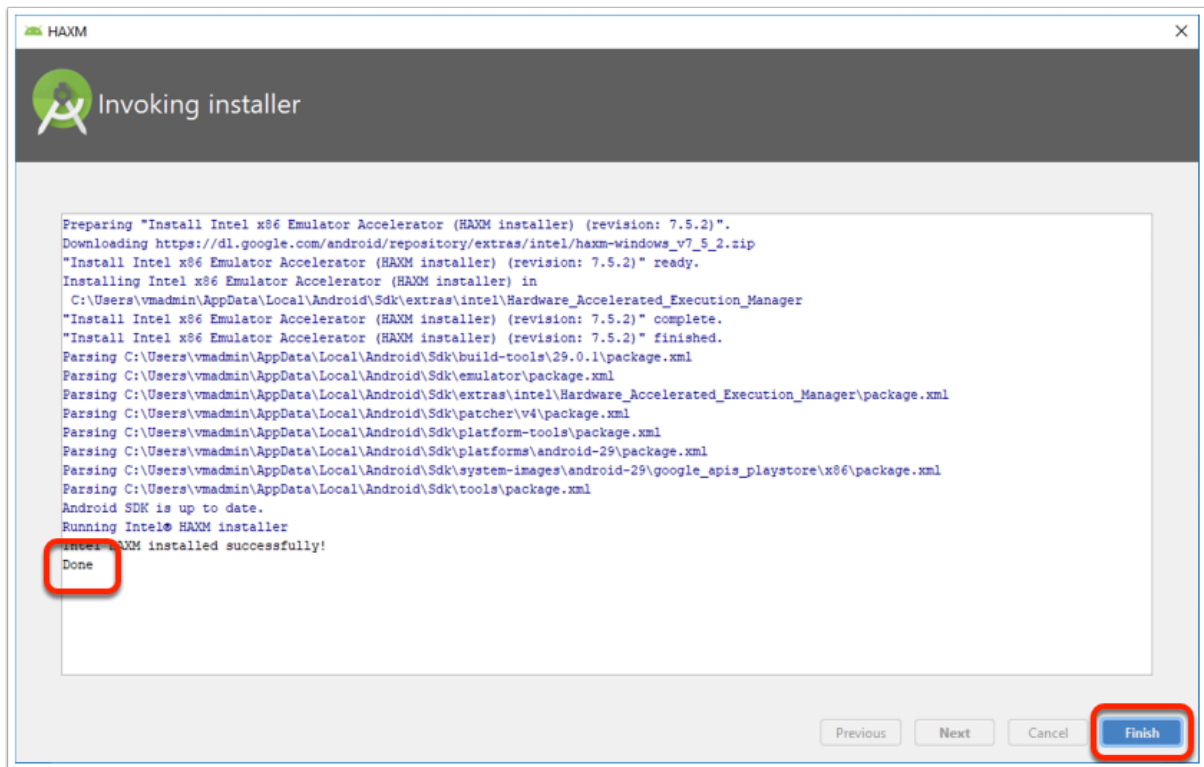


In the Select a system image window click on **Install Haxm**

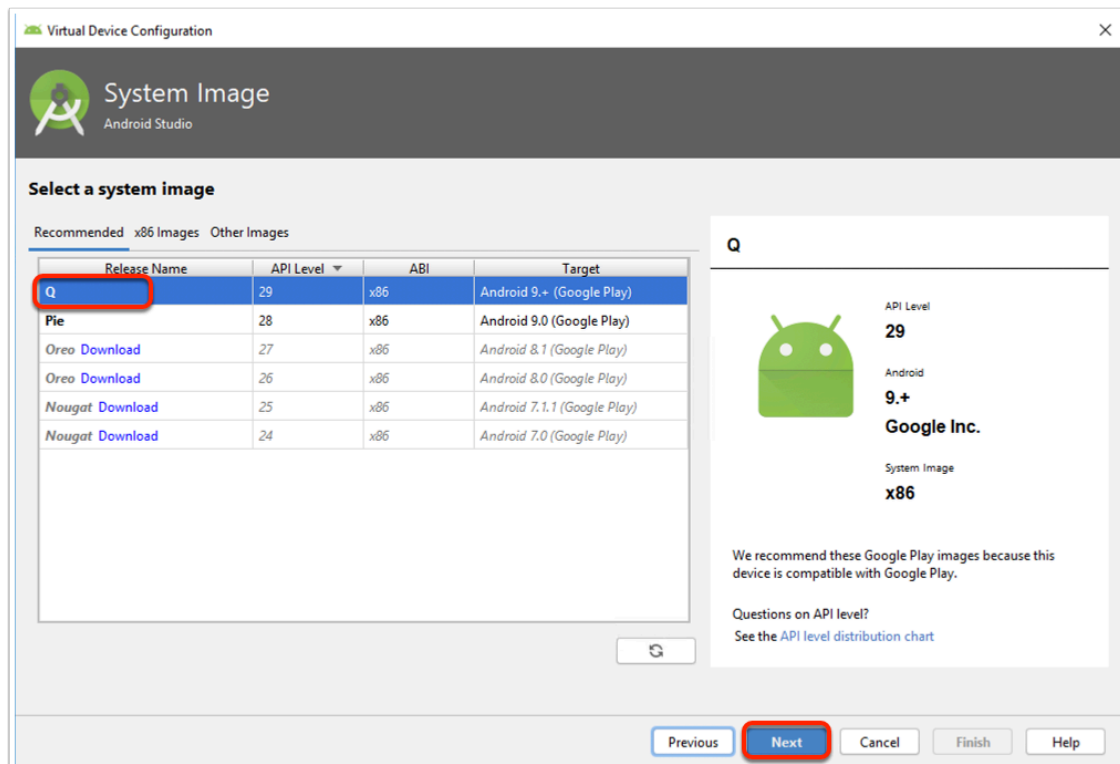


Click **Yes** to allow windows command processor to make changes to your device

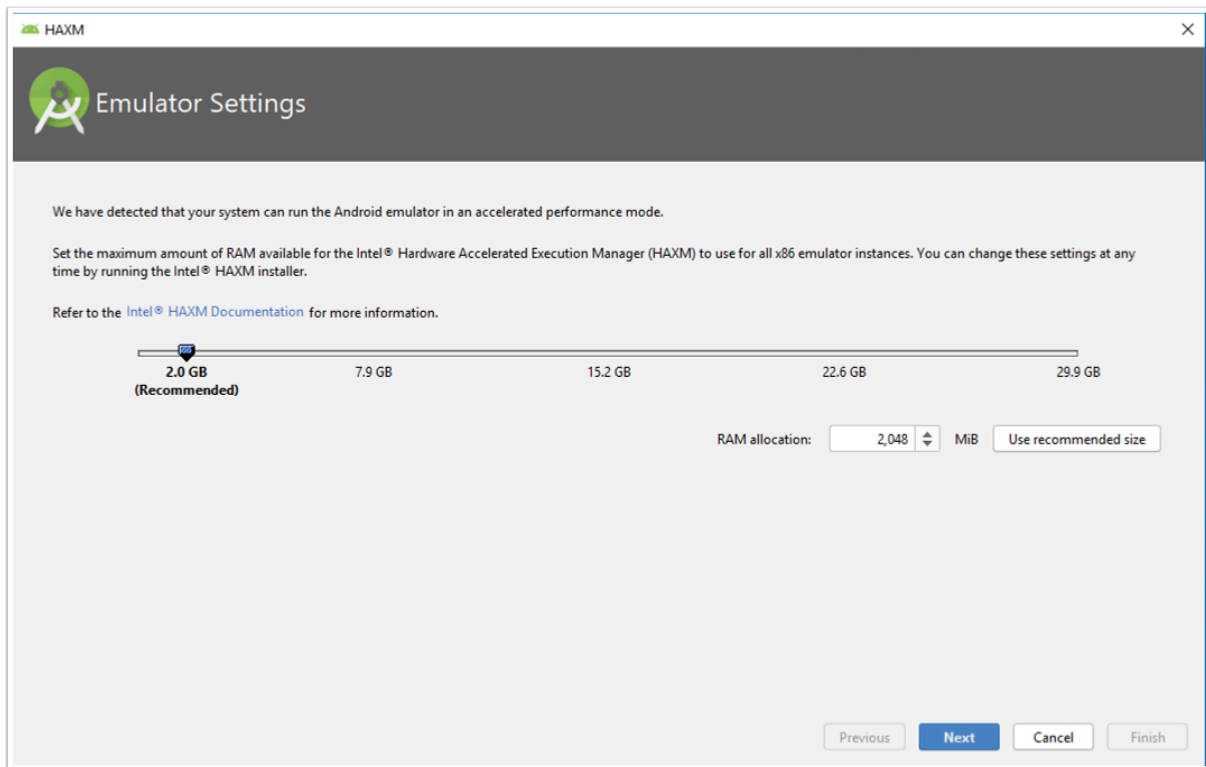




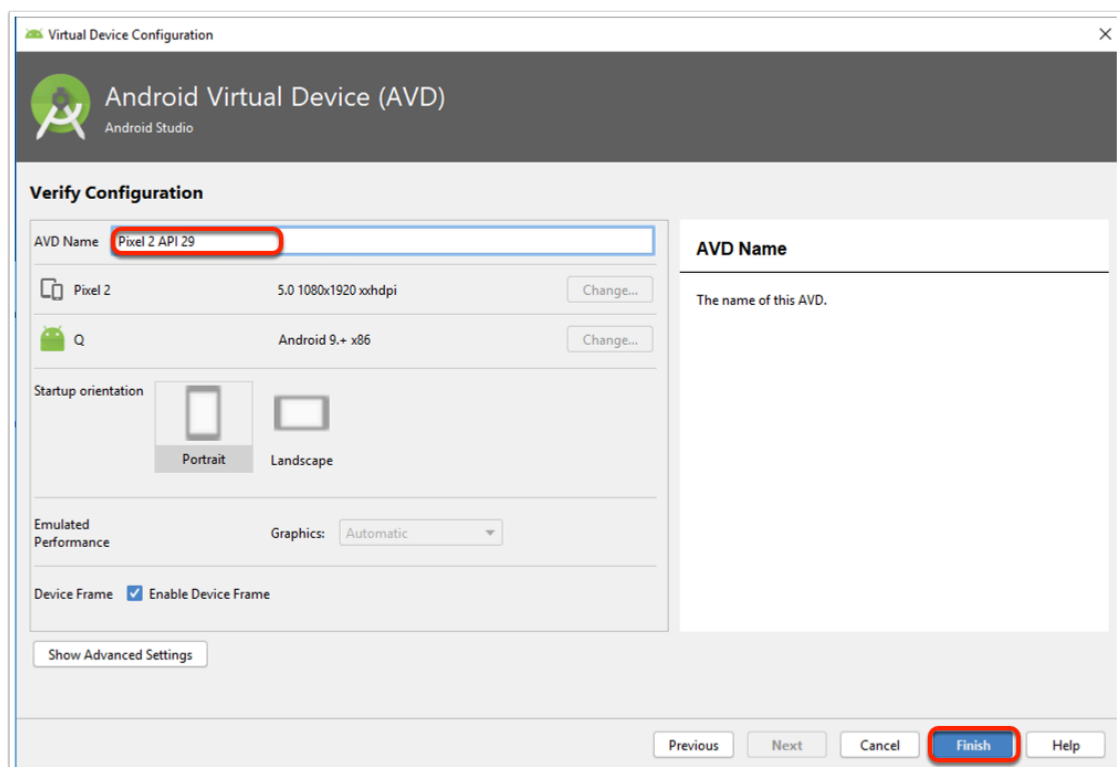
Back in the Select a system image window Select **Q** and click **Next**



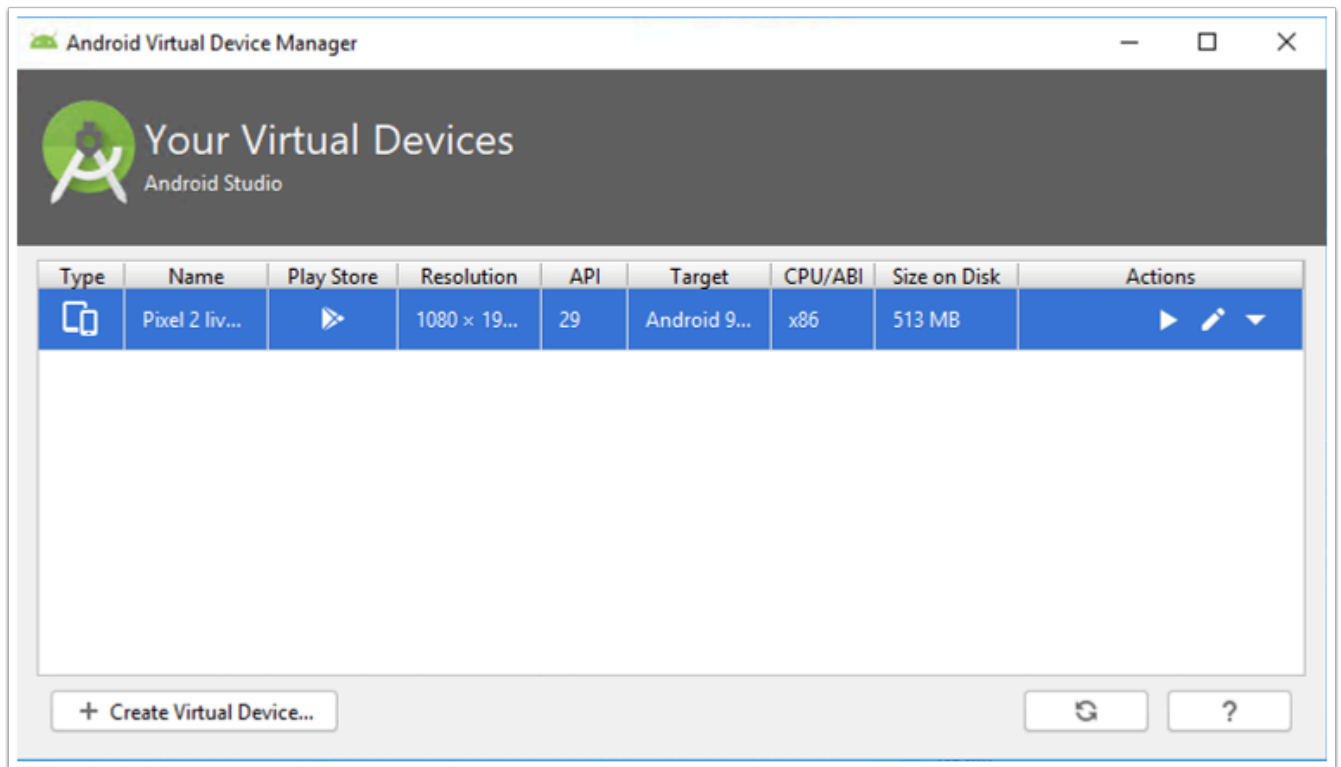
In the emulator settings window, Use the recommended memory settings and click **Next**



Give a name to your virtual device and click **Finish**



In your Android virtual device Manager window, in the actions column click on the "**Play**" icon to start the emulator



Your emulator is ready to use, if you need to restart your device you can hold the power icon to see the power options.

