

# Getting Started - Workspace ONE Access & Workspace ONE UEM SaaS Instance

## Part 1 Overview

The scenario you will be working with this week is a company called euc-livefire. They are a very dynamic organisation and have traditionally been on-premise but have recently moved into the cloud without truly understanding the challenges and would like a simple solution from an end-user perspective.

The organisation has key drivers around security, availability, mobility, and business continuity. They have an existing infrastructure with multiple authentication services such as OKTA and active Directory and would like to bring these together from the end-user perspective.

The organisation has recently started considering moving from office 2013 to Office 365 and sees this as another cloud resource the users would potentially need to connect to.

End-users require consumption of their applications across all platforms and recently have commented on how difficult it is to remember all the access portals and passwords.

As a consulting team our objective this week will be to integrate all existing resources both On-premise and SaaS into a singular simple solution for end users.

### 1. Overview of our On-premise and SaaS resources

#### On-premise resources

- The following resources in your lab environment are representative of what the EUC-Livefire organisation 'On-premise' resources.
  1. Active Directory Domain Controller and DNS services.  
Server Name is **ControlCenter2** and the Active Directory Domain is **EUC-Livefire.com**
  2. **Citrix XenApp server.**  
We have a Citrix XenApp server with Storefront and legacy applications published to Citrix XenApp server name is Citrix.euc-livefire.com. A dedicated server for the integration broker called **Citrixbroker.euc-livefire.com** and a server called **citrixrdsh.euc-livefire.com**
  3. **Connector Server**  
A dedicated Windows server called **ws1.euc-livefire.com**, this is dedicated for the Workspace ONE Access connector which will have to be installed.

#### Cloud SaaS resources

As part of this story and part of the final solution you will register now in this section, with the following SaaS resources.

- A SaaS Instance of Workspace ONE Access (formerly known as VMware Identity Manager)
- A SaaS Instance of WorkspaceONE UEM (formerly known as VMware AirWatch)

In a later part of the labs you will register with the following SaaS services with a view to building a complete EUC solution.

- Office 365 tenant which will federate with Workspace ONE Access
- A Salesforce tenant with Workspace ONE Access

## Part 2 : Registration of your SaaS Tenants for Workspace ONE Access and Workspace ONE UEM

This section takes you through the registration process for your lab resources. You will login to a SaaS tenant of Workspace ONE Access and Workspace ONE UEM.

In addition you will login and gain access to what will represent your on-premise components.

These include the Microsoft Windows Workspace ONE Access Connector, your Windows 10 Test Virtual machine and your Citrix Farm

1. **To Register for the course (Digital Workspace Livefire)** by clicking on the unique lab registration link found on [www.vmware.com/go/euclivefire](http://www.vmware.com/go/euclivefire) that takes your to [mylearn.vmware.com](http://mylearn.vmware.com)

2. Click on **Start This Course**

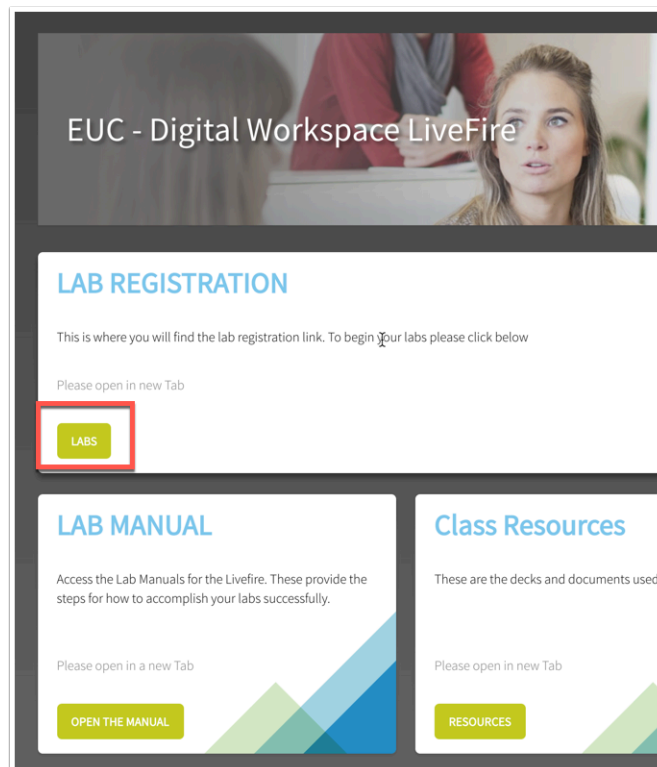
3. You will notice that a new Windows will open that allows you to Access the VLP (VMware Learning Platform) from which you will interact with your on-premises components. We will come back to these later in the lab.

4. At this time check your e-mail and you should have received an e-mail from **svc.labadmin@vmware.com**.

**NOTE:** Check your JUNK folder

5. This e-mail contains the unique tenant for your Workspace ONE Access SaaS instance. Click on the **TENANT URL** to launch the Workspace ONE Access Admin Console.

Use the credentials provided to login : Username: **Administrator** Password: **VMware1!**



Home > Services > VMware Education

## VMware Education

### Course: **Digital Workspace Livefire**

Delivered by the EUC-Livefire team, the Digital Workspace Class empowers technical professionals to focus on solutions and expose an individual to the broad base of product and the challenges one might face with integrations through deep-dive labs, expert to expert discussions, and experience-based knowledge sharing.

Length: 4 Days

[Start this Course](#)

[<-- Back](#)

If you have any questions about this course, please contact the course manager at [eagudelo@vmware.com](mailto:eagudelo@vmware.com)

Home > Services > VMware Education > Register

## VMware Education

Simeon, your registration is **complete**. You may wish to print this screen for your records. You will also receive this information in an email confirmation.

[Start this Course](#)


### Registration Summary

Class: **Digital Workspace Livefire** [372556]  
Student: Simeon Frank  
Registration No: 22909680  
Expires: Dec 05, 2018  
Location: Online (delivered to your web browser)

### Next Steps

- Register another student in [Digital Workspace Livefire](#)
- View your [current enrollments \(myEnrollments\)](#)
- [Questions/Help](#)

AirWatch Workshop | vIDM Tenant Information


 **svc.labadmin**  
Simeon Frank  
Wednesday, November 28, 2018 at 4:46 PM  
[Show Details](#)

Simeon,

Due to your recent enrollment in US-LSS-2018-09-EUC-v4.0, you have received a temporary VMware Identity Manager tenant that is necessary to complete the lab!

- **Tenant URL:** <https://sfrank5440.vdmpreview.com>
- **Admin Username:** Administrator
- **Admin Password:** VMware!!

To login to your VMware Identity Manager tenant, navigate to the Tenant URL and use the provided Admin Username and Password values on the login screen.

  
Workspace ONE™

Username  
administrator

Password  
\*\*\*\*\*

System Domain

[Sign in](#)

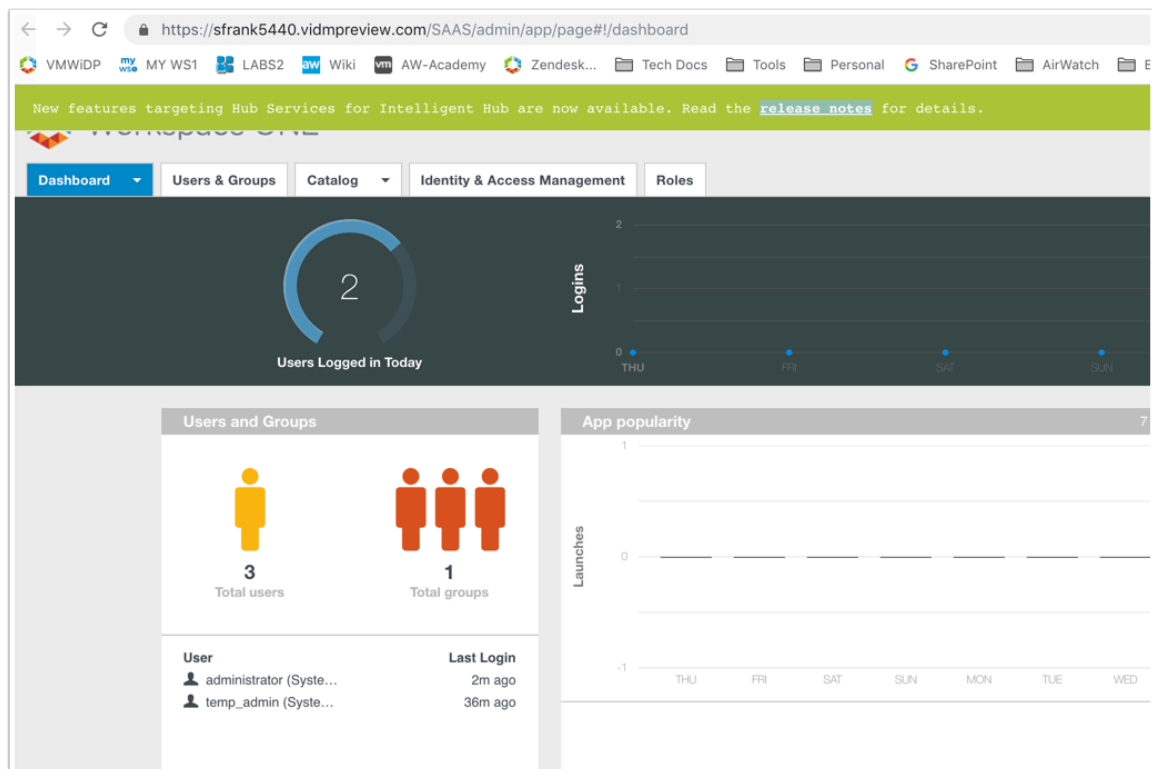
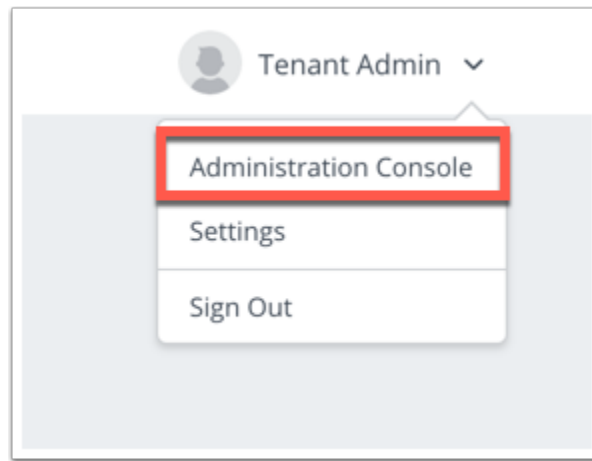
[Forgot Password?](#)

[Change to a different domain](#)

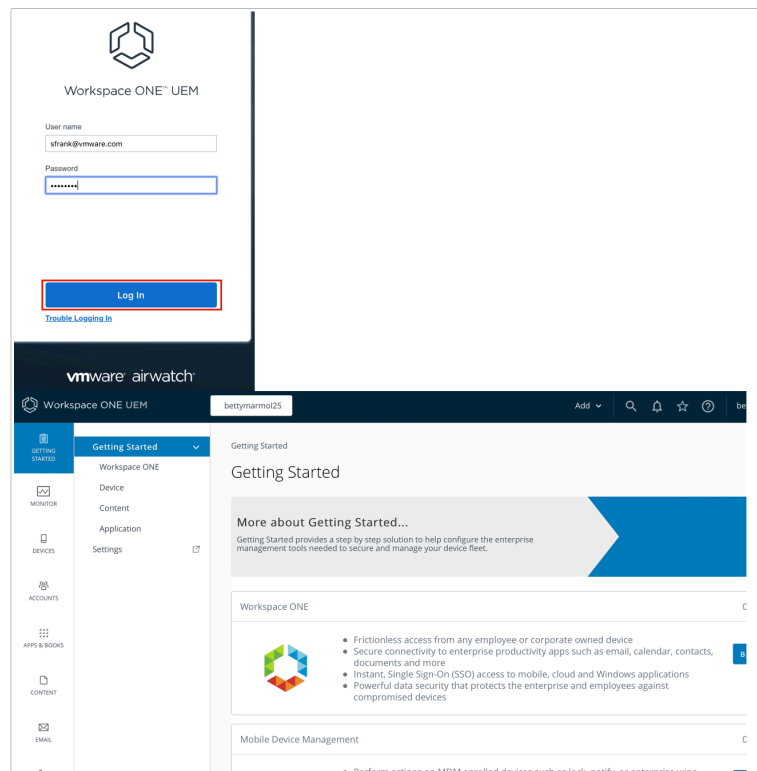
vmware

6. Now that you are signed in, change from the catalog view to the admin console by navigating to the top right and clicking on Tenant Admin and selecting Administration Console from the drop-down.

7. You should now see the Workspace ONE Access **Admin Console** to which we will return in a later lab.



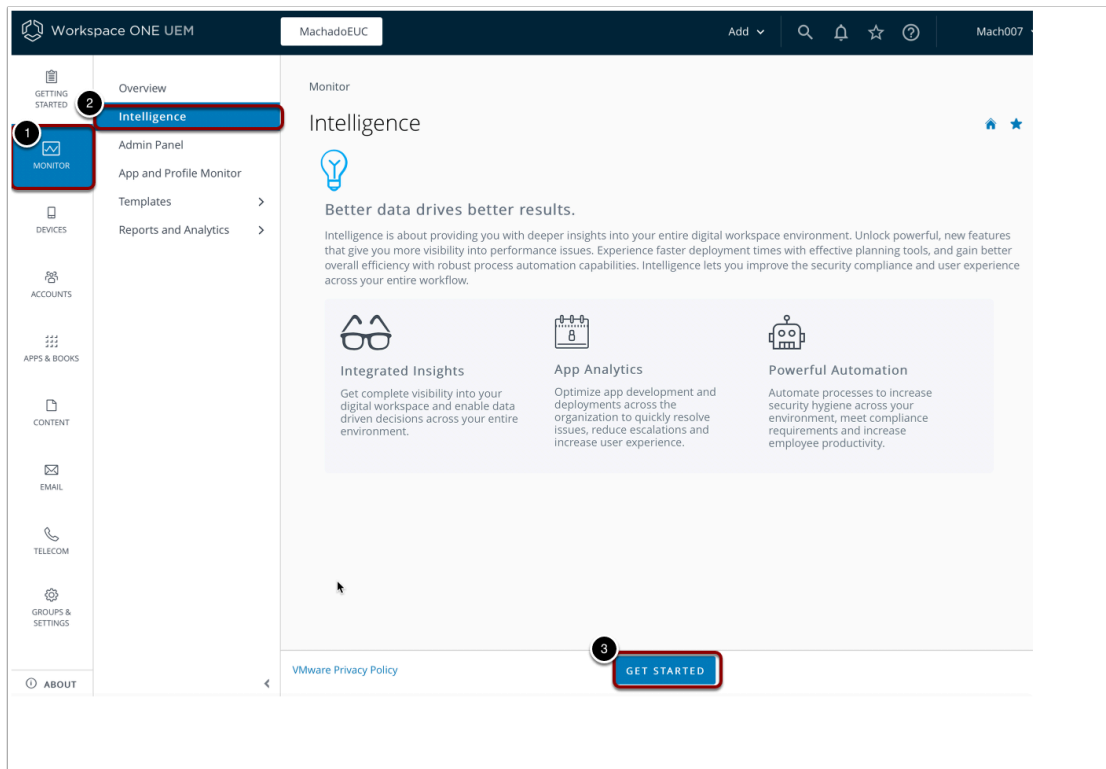
8. Open a browser and navigate <https://cn-livefire.awmdm.com>
9. Use the e-mail address you signed up to the course with as the **User Name** (Eg sfrank@vmware.com) and the password: **VMware1!** Click **Log In**
10. Now set a security question and answer and a four digit Pin
11. You should now be on the **Getting started** window of the UEM console which is the default landing page.



## Part 3. Integrating with Workspace ONE Intelligence

This part of the lab will take you through how to activate your WorkspaceOne Intelligence Trial environment from the UEM console.

1. IF you aren't already, log into the Workspace ONE UEM console by opening a browser to <https://cn-livewire.awmdm.com>
2. Login using your **e-mail** as username and password: **VMware1!**
3. Select **Monitor** on your left of the Workspace ONE UEM pane and then select **Intelligence** and click **GET STARTED**



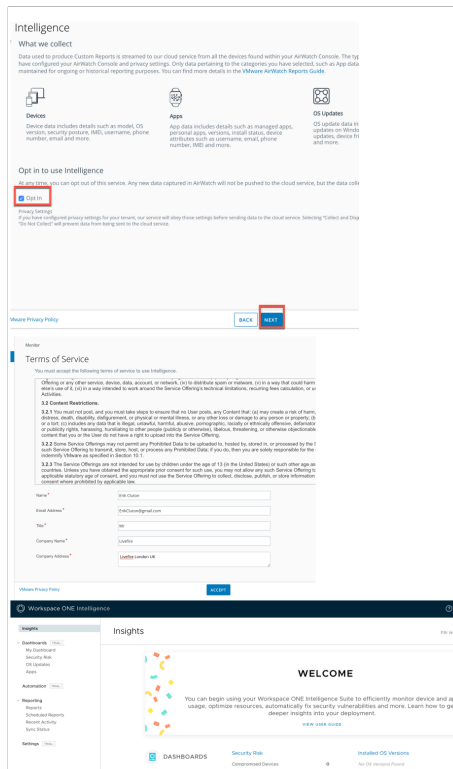
4. It will now give you the information as to what Intelligence will collect from your UEM environment.

Click the **check box** next to "**Opt In**" and select **Next** at the bottom of the page.

5. You will now need to **fill in your details** and select **ACCEPT**. Note: The form values can be fictitious.

6. You will now be re-directed to the Intelligence server.

You now have access to the WorkspaceOne Intelligence platform.



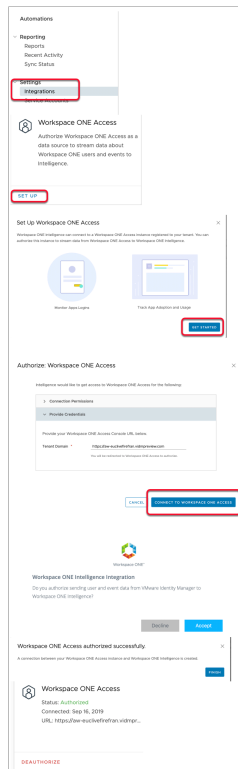
We will setup the WorkspaceOne Intelligence integration with Workspace ONE Access. this will allow us to begin aggregating information based on logins to Workspace ONE UEM and AppLaunch.

1. On the left of the pane, navigate to and select the dropdown next to **Settings** , and select **Integrations** select **SET UP** under **Workspace ONE Access**
2. Select **GET STARTED** on the the wizard page
3. On the **Authorize: Workspace ONE Access** page select **Provide Credentials** and next to **Tenant Domain\*** type **your unique Workspace ONE Access tenant URL** for this course. e.g **https://aw-livefirerplaston.Workspace ONE Accesspreview.com**
4. Select **CONNECT TO WORKSPACE ONE ACCESS**
5. On the **Workspace ONE Intelligence Integration** window select **ACCEPT**
6. On **Workspace ONE Access authorised successfully** window select **FINISH**

This concludes the the setup of our VMware WorkspaceOne tenants needed for the remainder of the labs.

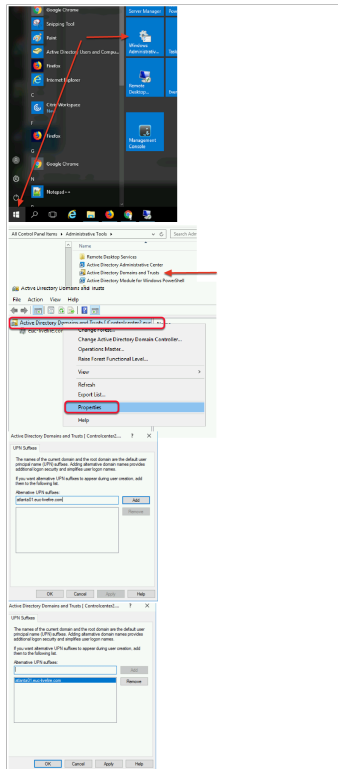
***You may now move on to the next lab***





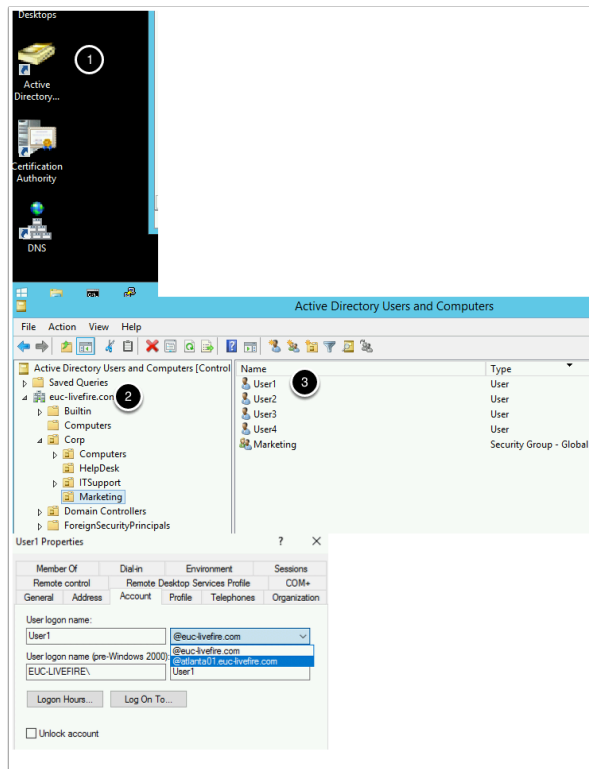
## Part 4. Configuring domain trust

1. On your **ControlCenter Desktop**, Select the **Start** Button to launch the **Start Menu** and select **Administrative Tools**
1. Select **Active Directory Domains and Trusts** shortcut
2. In **Active Directory Domain and Trusts mmc** select and right-click **Active Directory Domains and Trusts [ControlCenter2.euc-livewire.com]**
3. Select Properties
4. Under the **UPN Suffixes** Tab under **Alternative UPN suffixes** type *your custom domain name*. the example we have in this lab is **tokyo01.euc-livewire.com**
5. Select **Add** , select **OK** to close the window, **close** the **Active Directory Domains and Trusts** Window.



2.

- On your **ControlCenter** Desktop **close** Active Directory Domain and trusts.
  1. In the **Administrative tools** folder select **Active Directory Users and Computers** shortcut and select **open**
  2. Under the euc-livefire.com domain, expand the **Corp > Marketing** Organisational Units
  3. You will notice we have **Users 1 to 4**. Select and right-click **User1** and select **Properties**
  4. Select the **Account** tab, to the right of **User logon name:** select the **drop down arrow** and select ***your custom domain***
  5. Repeat these tasks for all 4 users. **Close** the **Active Directory Users and Computers** window



## Part 5. Configuration of a Custom Test Account

In this part you'll be creating your test user for the salesforce lab.

1. Open **Active Directory User & Computers**. Expand the **EUC-livefire.com** domain, expand the **Corp OU** and expand the **Marketing OU**
2. On the **Marketing OU** select and right-click the **Marketing OU** and select **New User**. Fill in the unique user details,
  - **First Name:** User xxxxx {your student number + {the first letter of your city and country abbreviation}} eg {for San jose, Costa Rica User33SCR}
  - **Last Name:** {the first letter of your city and country abbreviation} eg. SCR
  - **Username:** FirstName@customdomain.euc-livefire.com, eg. User33SCR@Sanjose33.euc-livefire.com}
- Select **Next**
- In the **New Object - User**, type your **password VMware1!**
- select the **Password never expires checkbox**, select **Next**, select **Finish**
- Select your **custom user** and select and go to **properties**, on the **General** Tab type in the **email address** eg.user35AK@utrecht35.euc-livefire.com
- Select the **Member Of** tab select **Add**, in the **Enter the object names** box type **Marketing** and select **Check Names**, select **OK**, select **OK**

