

Getting started with Workspace ONE

In this section of your hands on labs you will put in base requirements for Workspace ONE Access to integrate with VMware Horizon.

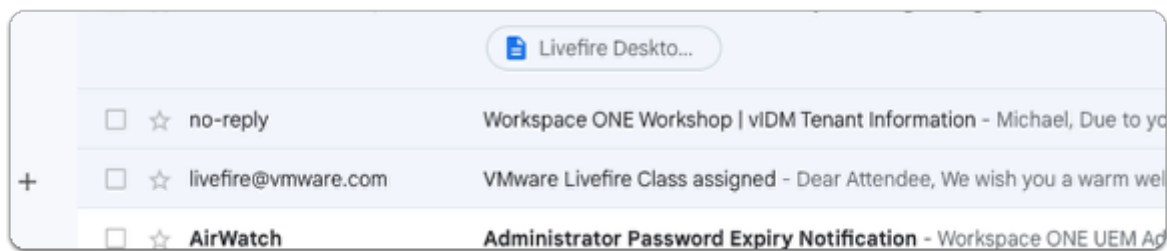
You will install the Workspace ONE Access Connector and configure Microsoft Active Directory integration to sync User accounts and Security Groups

Part 1: Workspace ONE Access Connector pairing pre-requisites

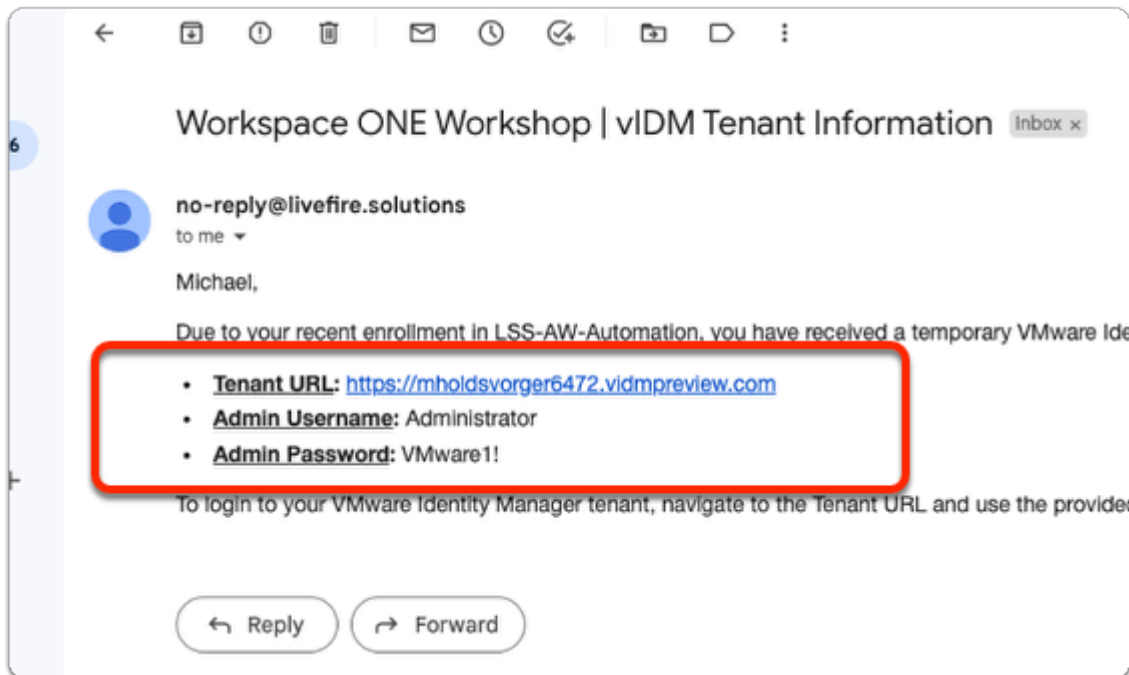
Part 2: Installing and configuring the Workspace ONE Access Connector

Part 3: Configure Directory Sync with Workspace ONE Access Connector

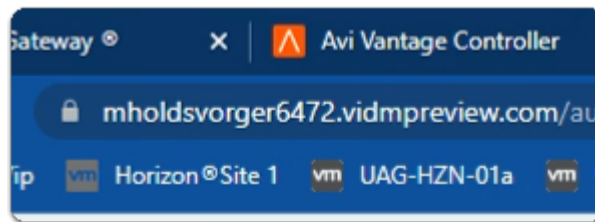
Part 1: Getting started with Workspace ONE Access in our lab environment



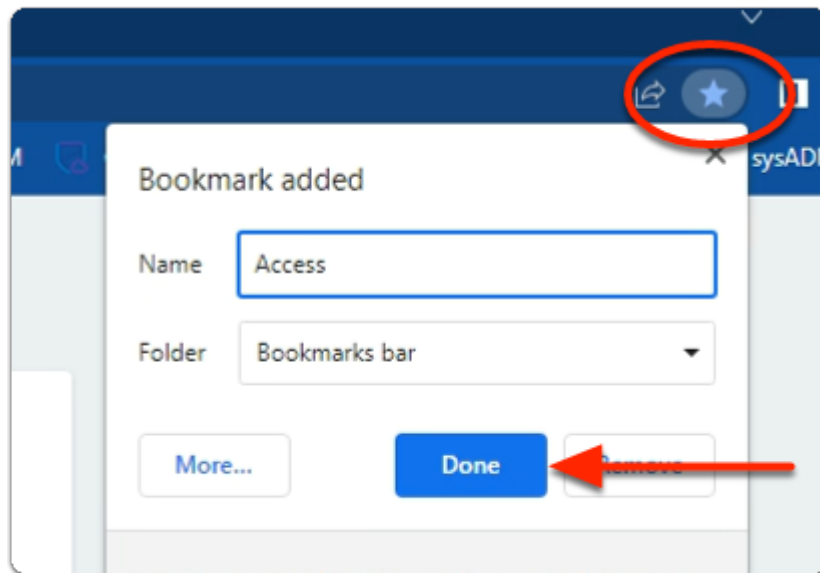
1. In your email account
 - (used for registering you on this session)
 - look for a **no-reply** email with **Workspace ONE Workshop | vIDM Tenant Information**
 - **open** the email



2. In your email
 - **copy** your Tenant URL information



3. On your ControlCenter server
 - On your **Site 1 Profile** Chrome browser
 - **Paste** the **Tenant URL** information into the address bar
 - with your keyboard
 - select **Enter**

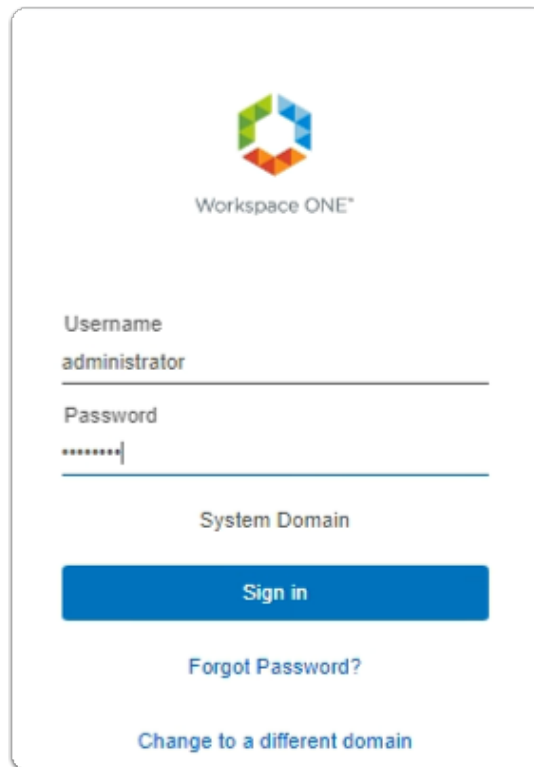


4. On the right side of the **Site 1 Chrome Browser**

- select the **Bookmark** Icon
- In the **Bookmark** added window
 - next to **Name**
 - enter **Access**
 - select **Done**

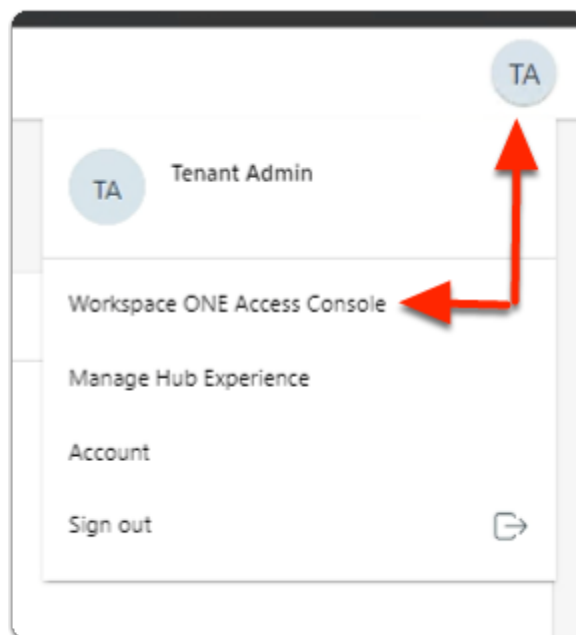
Part 2: Workspace ONE Access , Connector pairing pre-requisites

In this lab you will download the Workspace ONE Access connector configurations. These configurations will be used later in Part 4 to install the Workspace ONE Access connector.

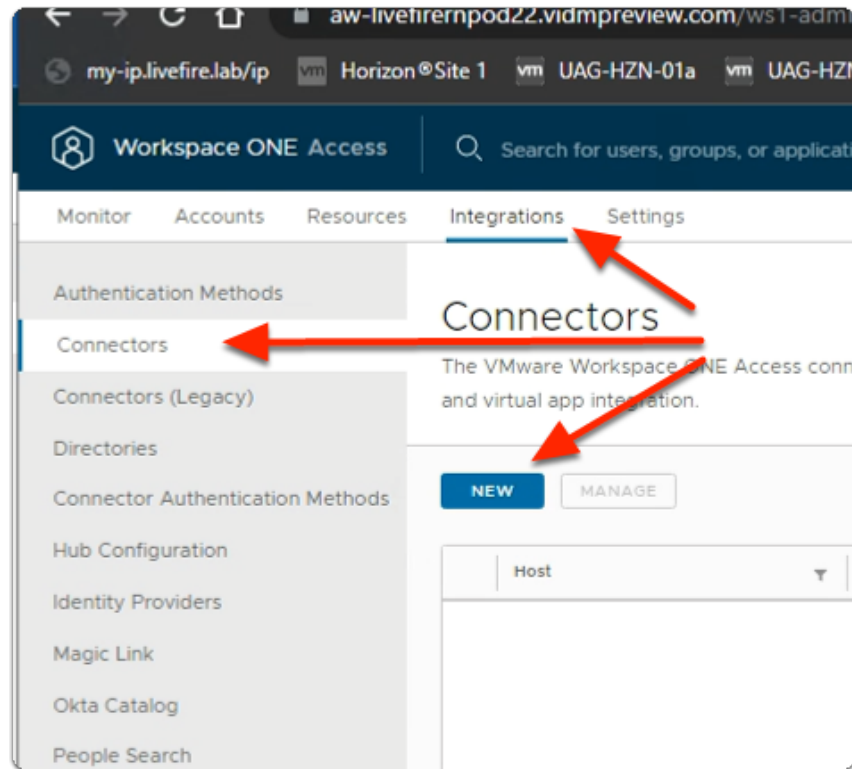


The image shows the Workspace ONE login interface. At the top is the Workspace ONE logo. Below it are two input fields: 'Username' with the text 'administrator' and 'Password' with masked characters '*****'. A 'System Domain' label is positioned above a blue 'Sign in' button. Below the button are two links: 'Forgot Password?' and 'Change to a different domain'.

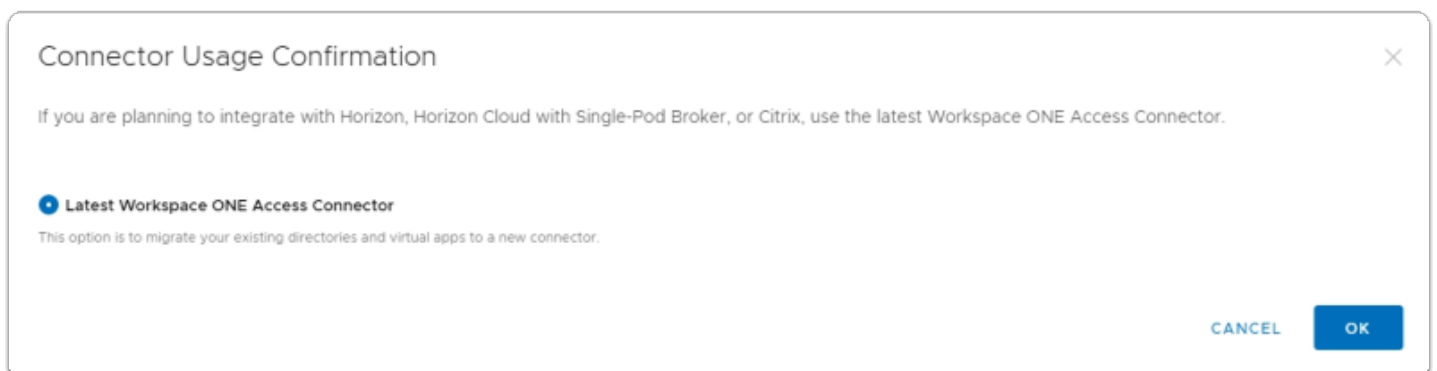
1. On your ControlCenter server
 - Open your **Workspace ONE Access**, Admin console URL
 - Under **Username**
 - enter **Administrator**
 - Under **Password**
 - enter **VMware1!**
 - Select **Sign In**



2. In the **Web Intelligent Hub Console**
 - To the right,
 - select **TA**
 - From the dropdown
 - select **Workspace ONE Access Console**



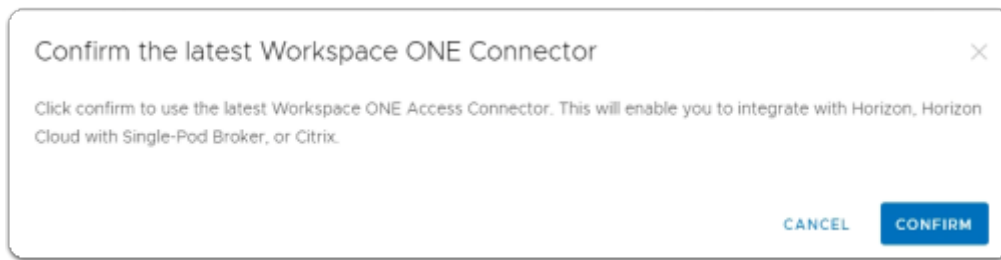
3. In the **Workspace ONE Access Console**
 - select **Integrations**
 - Under **Integrations**
 - select **Connectors**
 - In the **Connectors** area
 - select **NEW**



4. In the **Connector Usage Confirmation** window
 - select the **radio button**, next to :-

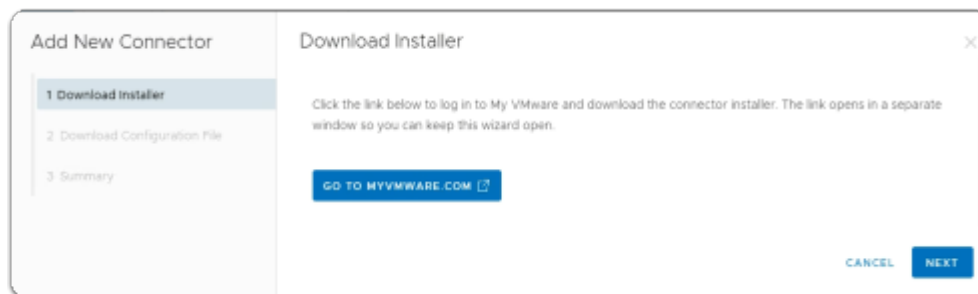
- **Latest Workspace ONE Access Connector**

- select **OK**



5. In the **Confirm the latest Workspace ONE Connector** window

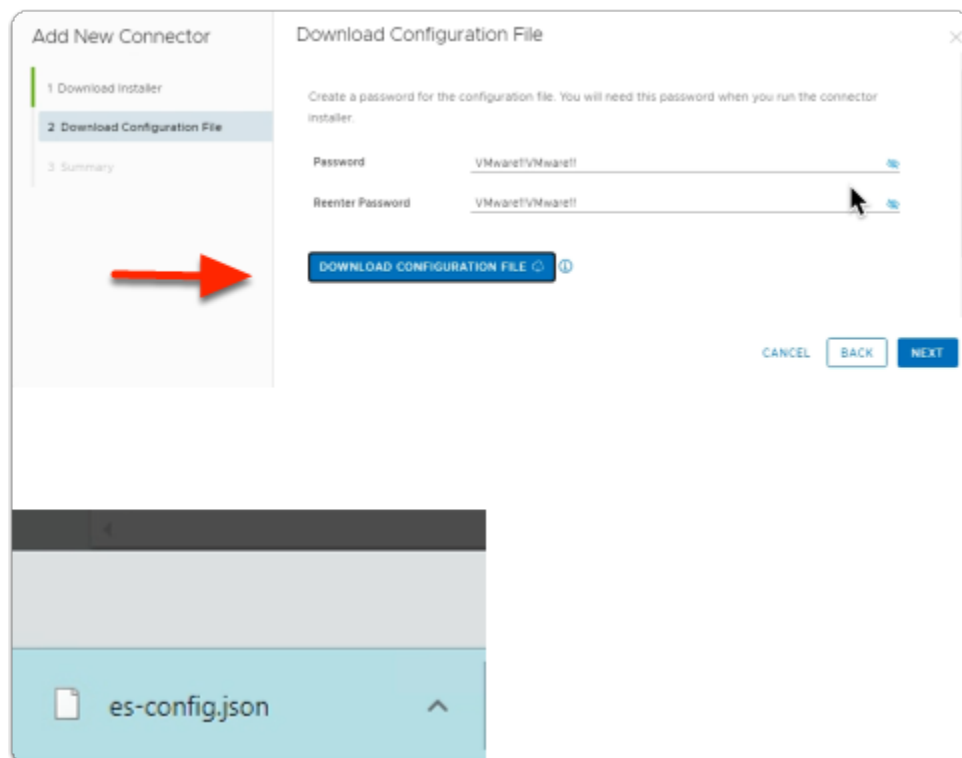
- select **CONFIRM**



6. In the **Add New Connector** window

1. **Downloader Installer** area

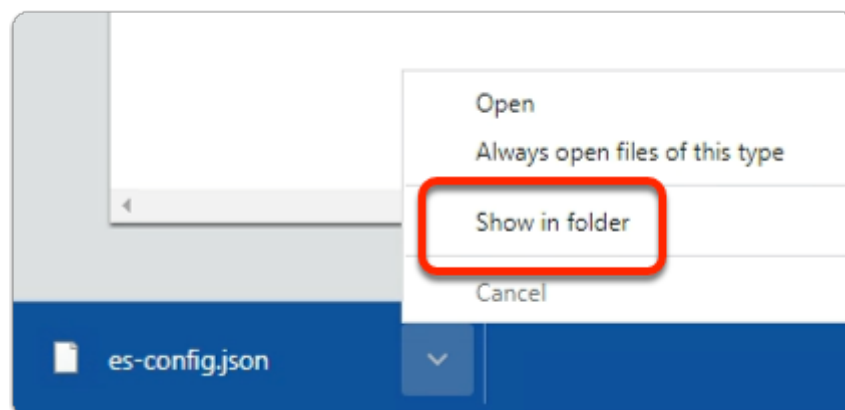
- select **NEXT**



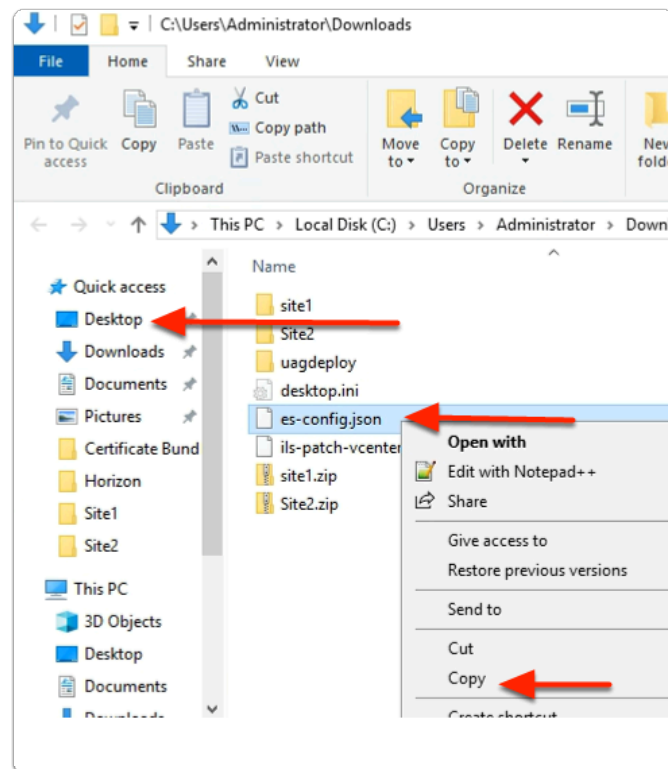
7. In the **Add New Connector** window
 2. **Download Configuration File** area
 - next to **Password:** enter **VMware1!VMware1!**
 - next to **Reenter Password:** enter **VMware1!VMware1!**
 - select **DOWNLOAD CONFIGURATION FILE**
 - note an **es-config.json** file gets downloaded
 - select **NEXT**



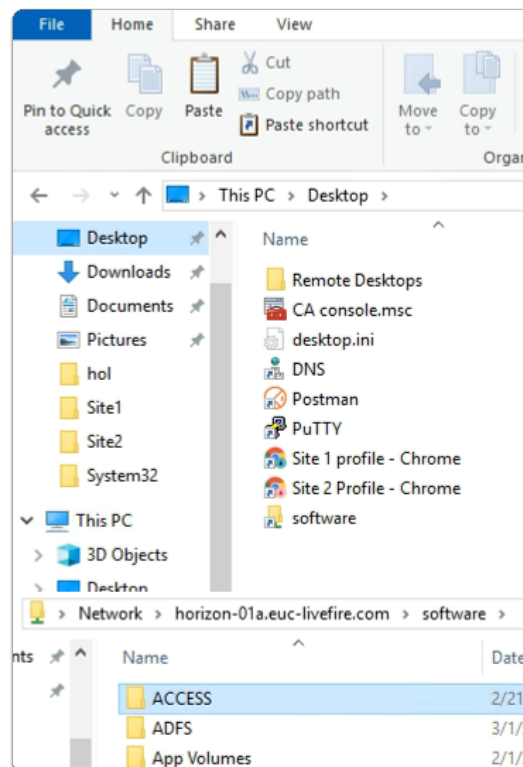
8. In the **Add New Connector** window
 3. **Summary** window
 - select **CLOSE**



9. On your ControlCenter server browser
 - Next to the **es-config.json**
 - Select the **Dropdown**
 - Select **Show in folder**

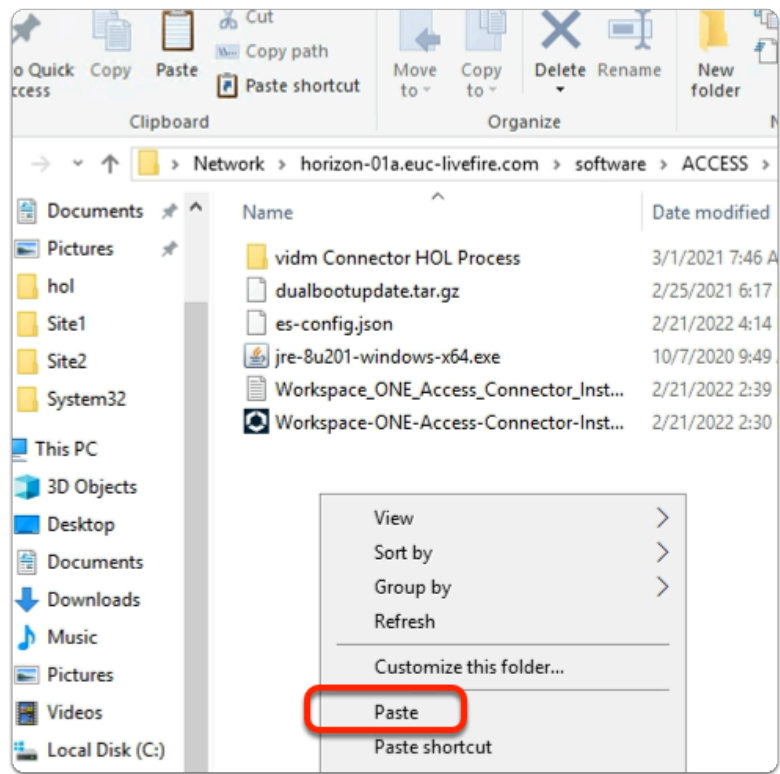


10. In the **File Explorer** window
- Select and right-click the **es-config.json** file
 - Select **Copy**
 - In the left pane
 - Select **Desktop**



11. In the **File Explorer** window

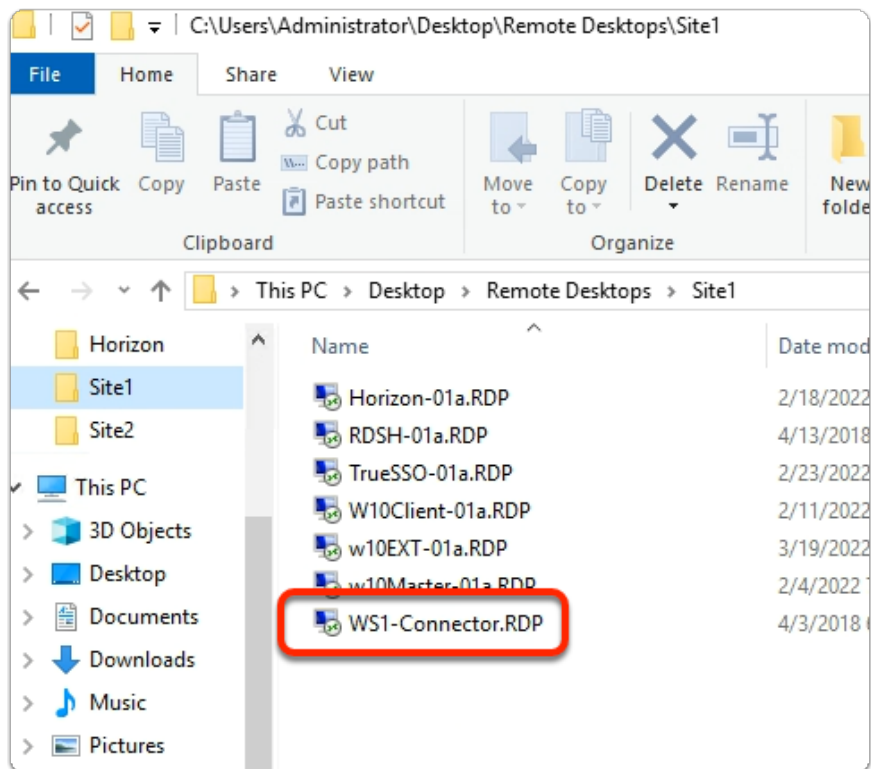
- **Desktop area**
 - Select the **Software** shortcut
 - In the **Software** folder
 - Open the **ACCESS** folder



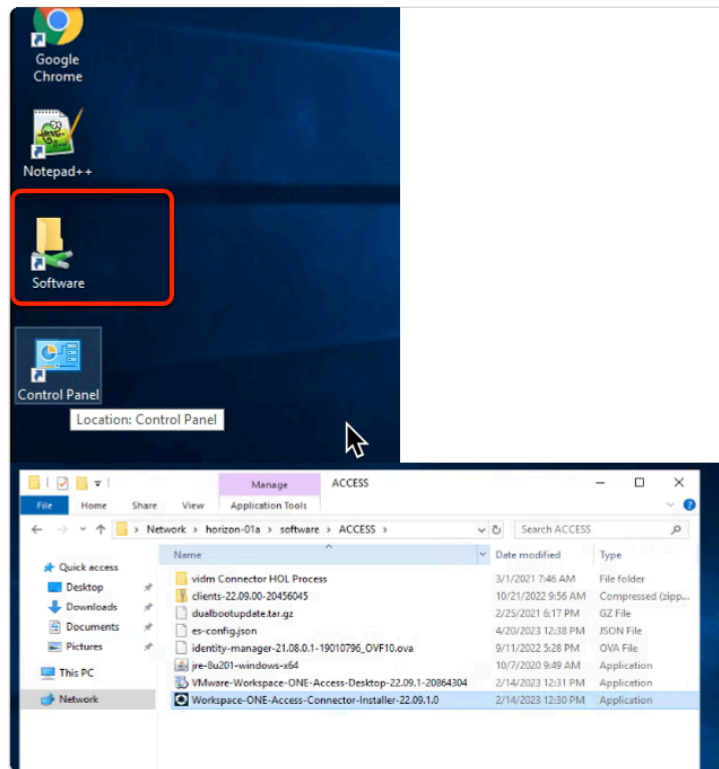
12. In the **File Explorer** window

- **ACCESS** folder
 - **Paste** your **es-config.json** file
- **Close** your **File Explorer** window

Part 3: Installing and Configuring the Workspace ONE Access connector

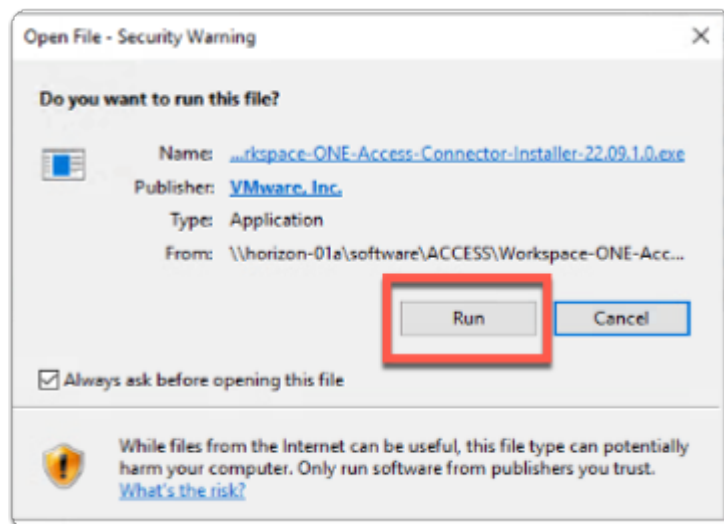


1. On your ControlCenter server
 - On the Desktop.
 - Open the **Remote Desktops\Site1** folder
 - Select and launch the **WS1-Connector.RDP** shortcut



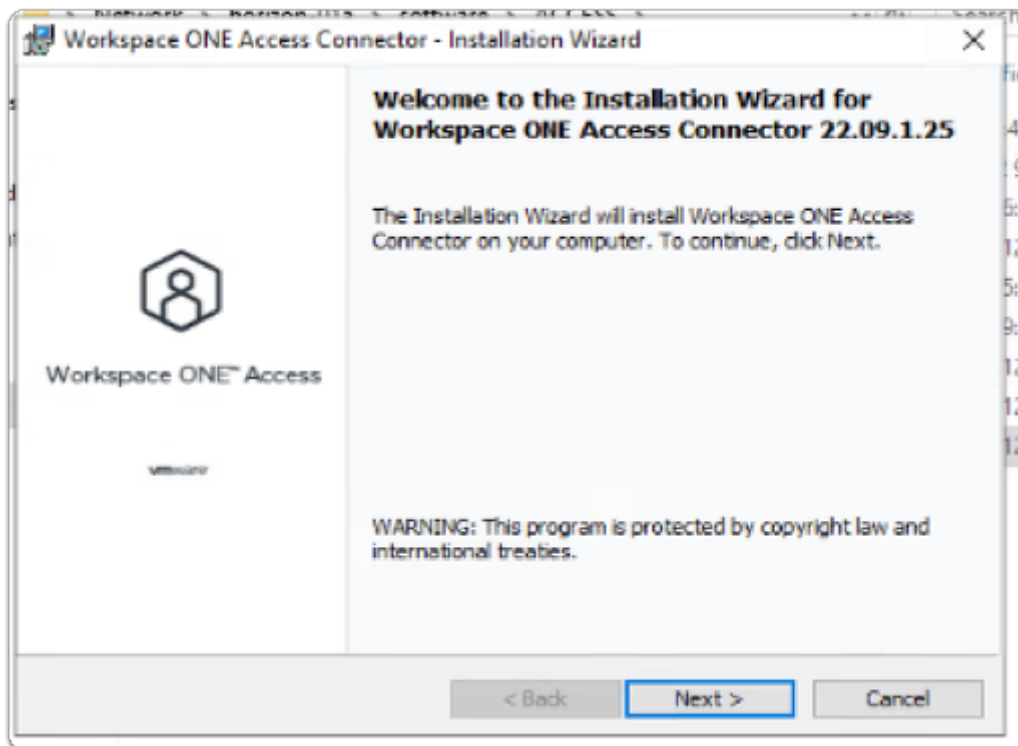
2. On your WS1-Connector server

- open the **Software** Folder
- select the **ACCESS** Folder
- select and Launch
 - **Workspace-ONE-Access-Connector-Installer-22.09.1.0.exe**

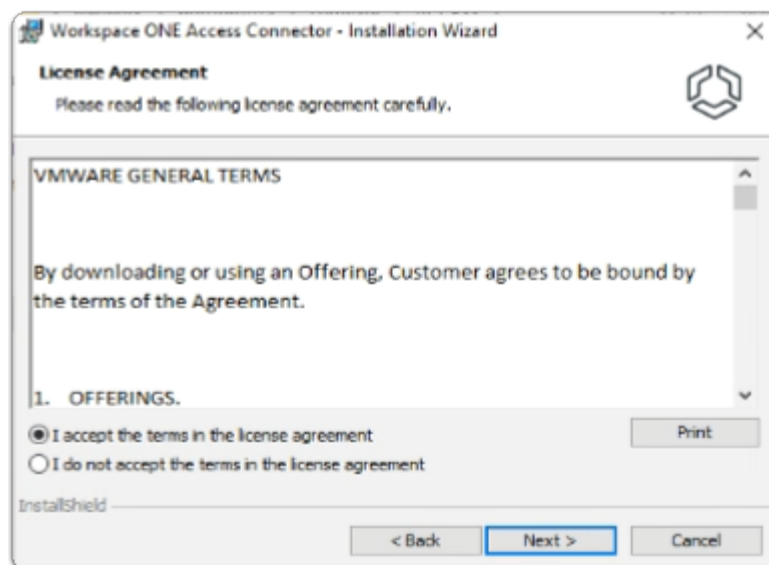


3. On your **WS1-Connector** server

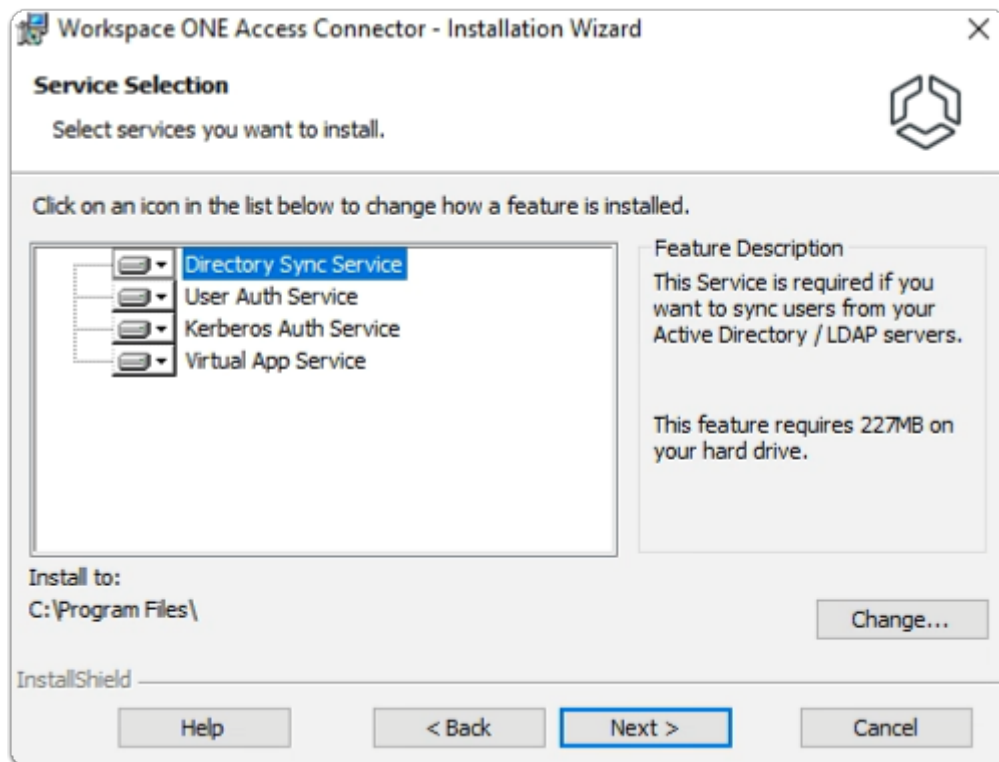
- on the **Open File - Security Warning** windows
 - select **Run**



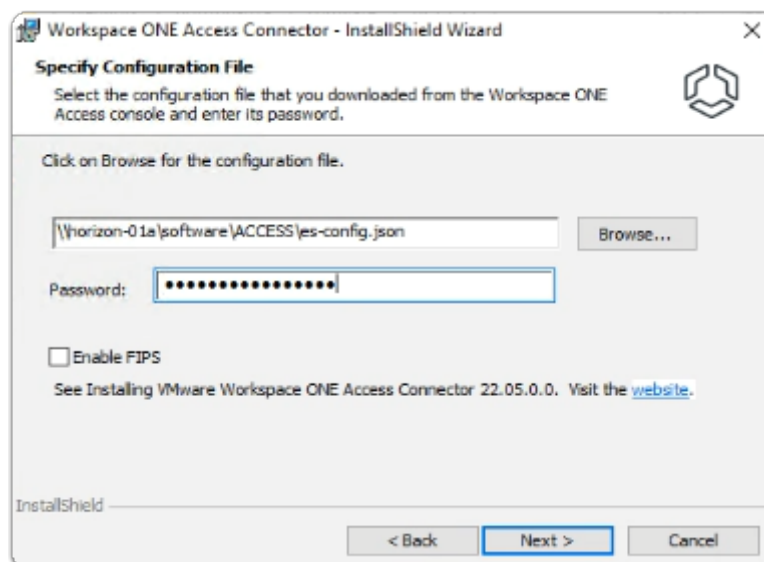
4. On the **Workspace ONE Access Connector - InstallShield Wizard**
 - in the **Welcome to the Installation Wizard for Workspace ONE Access Connector 22.09.0.0**
 - select **Next**



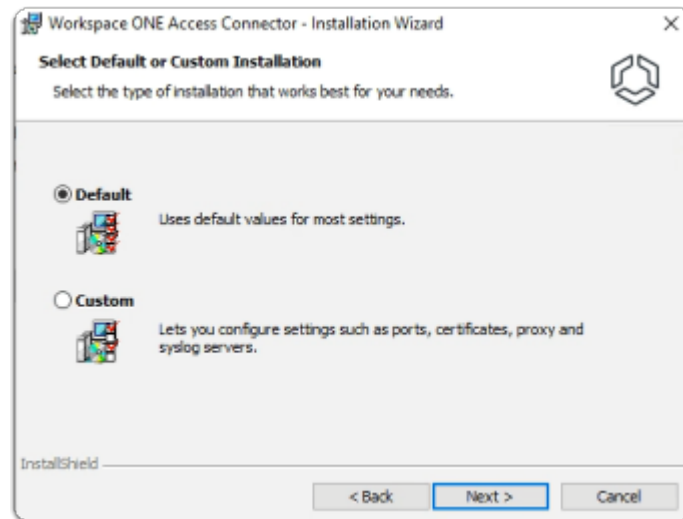
5. On the **Workspace ONE Access Connector - InstallShield Wizard**
 - **Licence Agreement** window
 - select the **radio button** next to:-
 - **I accept the terms in the license agreement**
 - select **Next**



6. On the **Workspace ONE Access Connector - InstallShield Wizard**
 - **Service Selection** window
 - Select **Next**

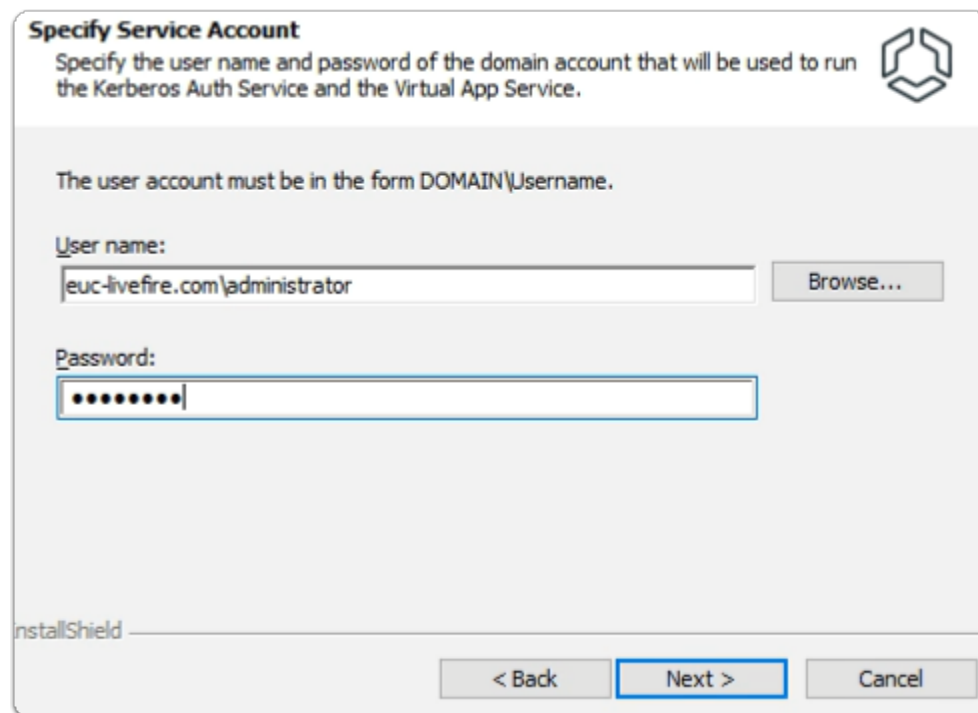


7. On the **Workspace ONE Access Connector - InstallShield Wizard**
 - **Specify Configuration File** window
 - In the box in front of **Browse...**
 - type **\\horizon-01a\software\ACCESS\es-config.json**
 - Next to **Password:** type **VMware1!VMware1!**
 - Select **Next**



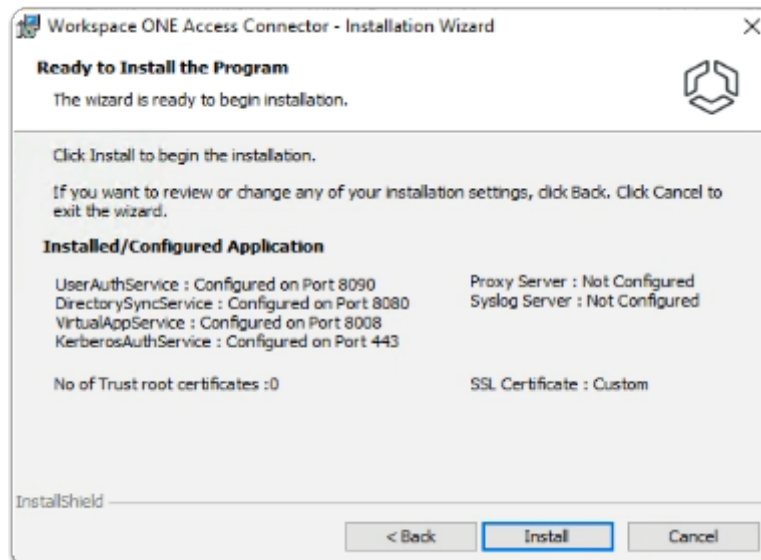
8. In the **Workspace ONE Access Connector - InstallShield** Wizard

- keep **Default**
- select **Next**



9. In the **Workspace ONE Access Connector - InstallShield** Wizard

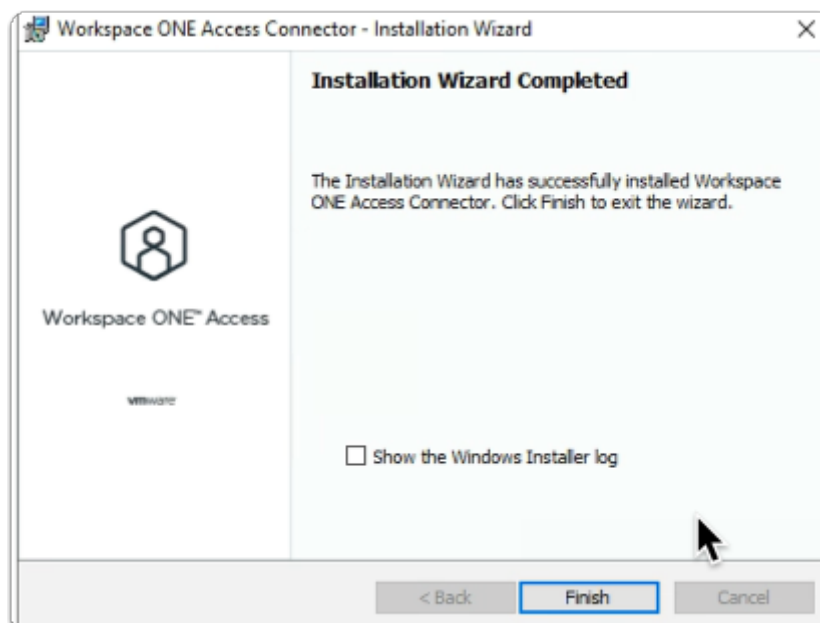
- **Specify Service Account** window
 - under **User name:** type
 - **euc-livefire.com\administrator**
 - under **Password:**
 - type **VMware1!**
- select **Next**



10. In the **Workspace ONE Access Connector - InstallShield** Wizard

- **Ready to Install** window
- select **Install**

💡 The Installation of the Workspace ONE Access Connector will take about 10 minutes to complete. Continue with Part 5 while the installation is going. Check back periodically to ensure it has successfully installed.

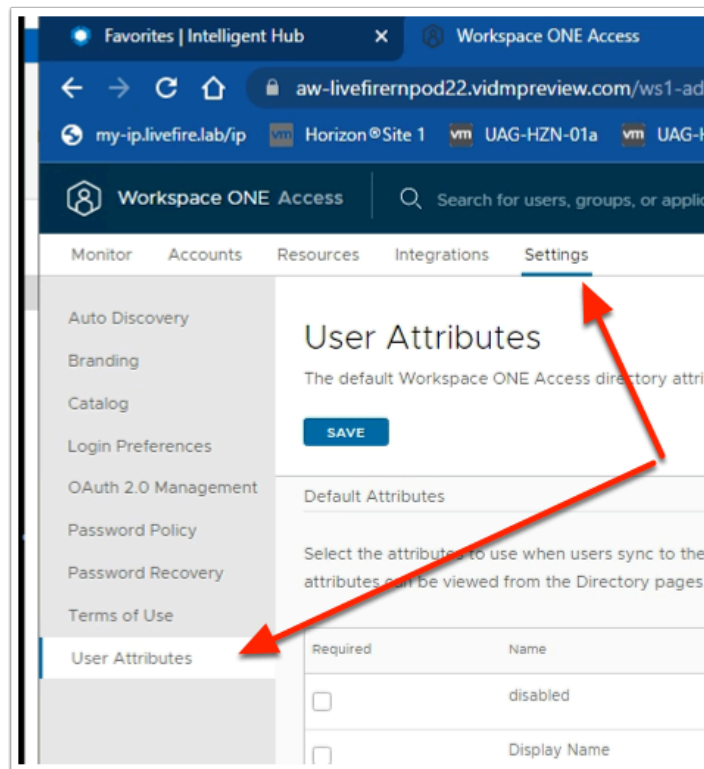


11. In the **Workspace ONE Access Connector - InstallShield** Wizard

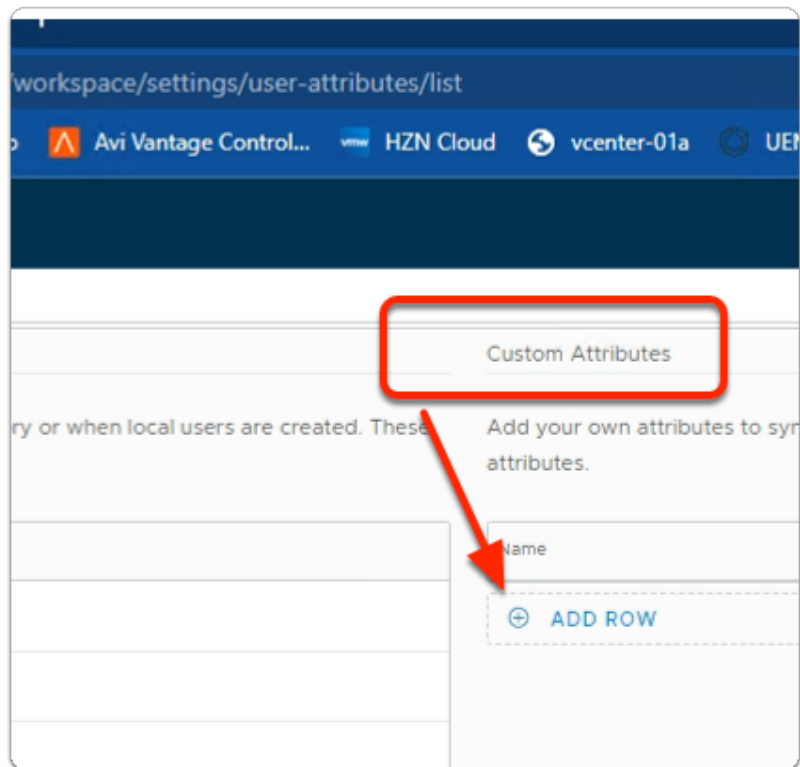
- **Installation Wizard Completed** window
- Select **Finish**

Part 4: Configuring Directory Sync with Workspace ONE Access connector

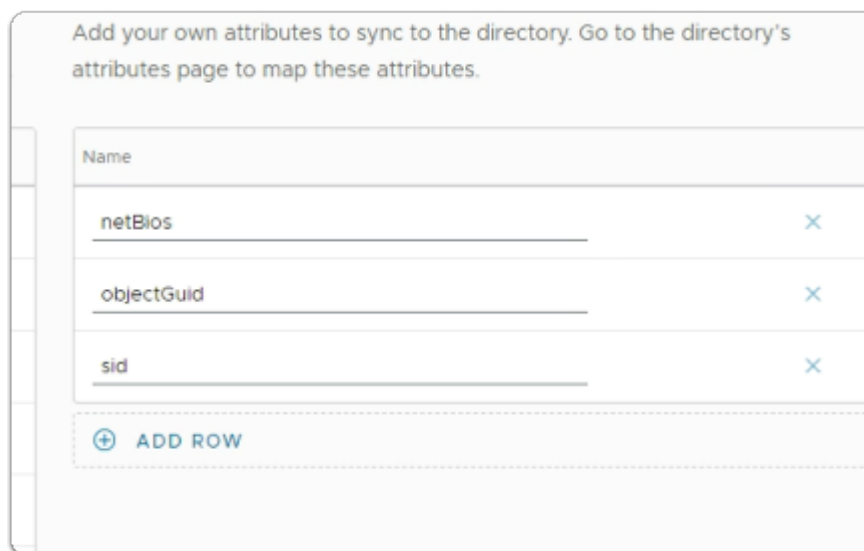
- i** First we will configure the Attributes. Note! Every organisation will need to research their requirements when deciding whether or not to set attributes to **required**. For specific applications where this needs to be considered, if the associated user object does not have the attribute, authentication might fail.



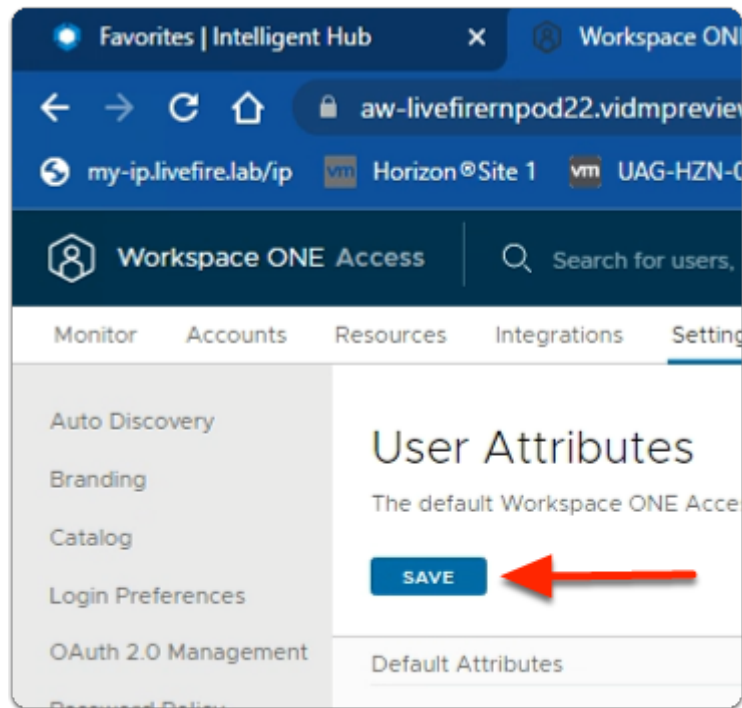
1. In the Workspace ONE Access Admin console
 - Select **Settings**
 - Select **User Attributes**



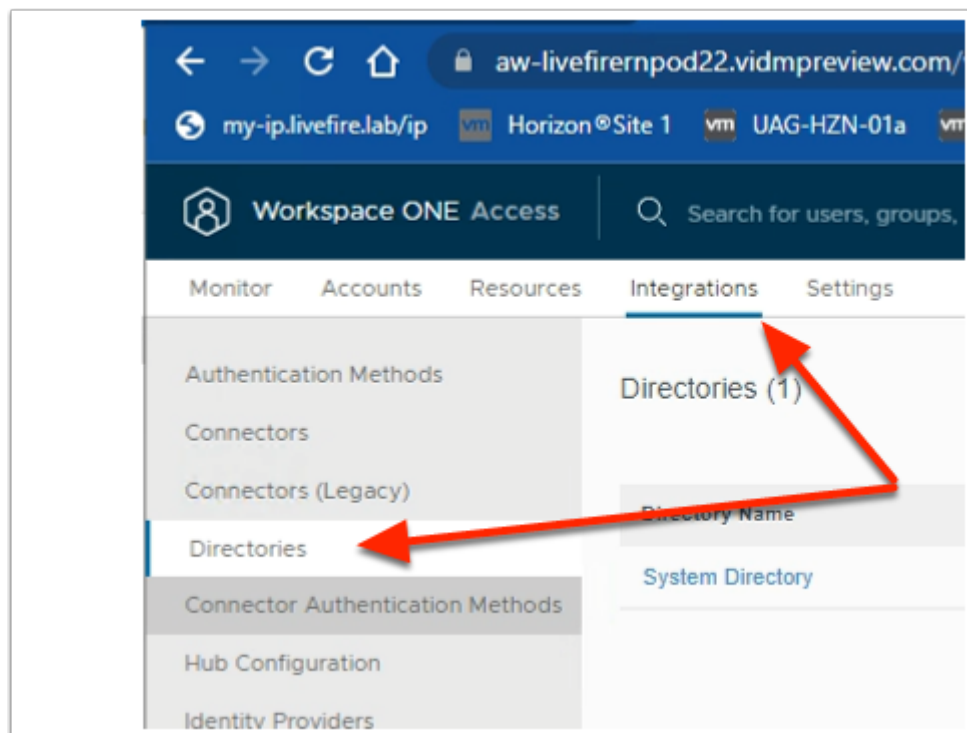
2. In the **User Attributes** console
 - In the right area under **Custom Attributes**
 - Select **+ ADD ROW** 3 times



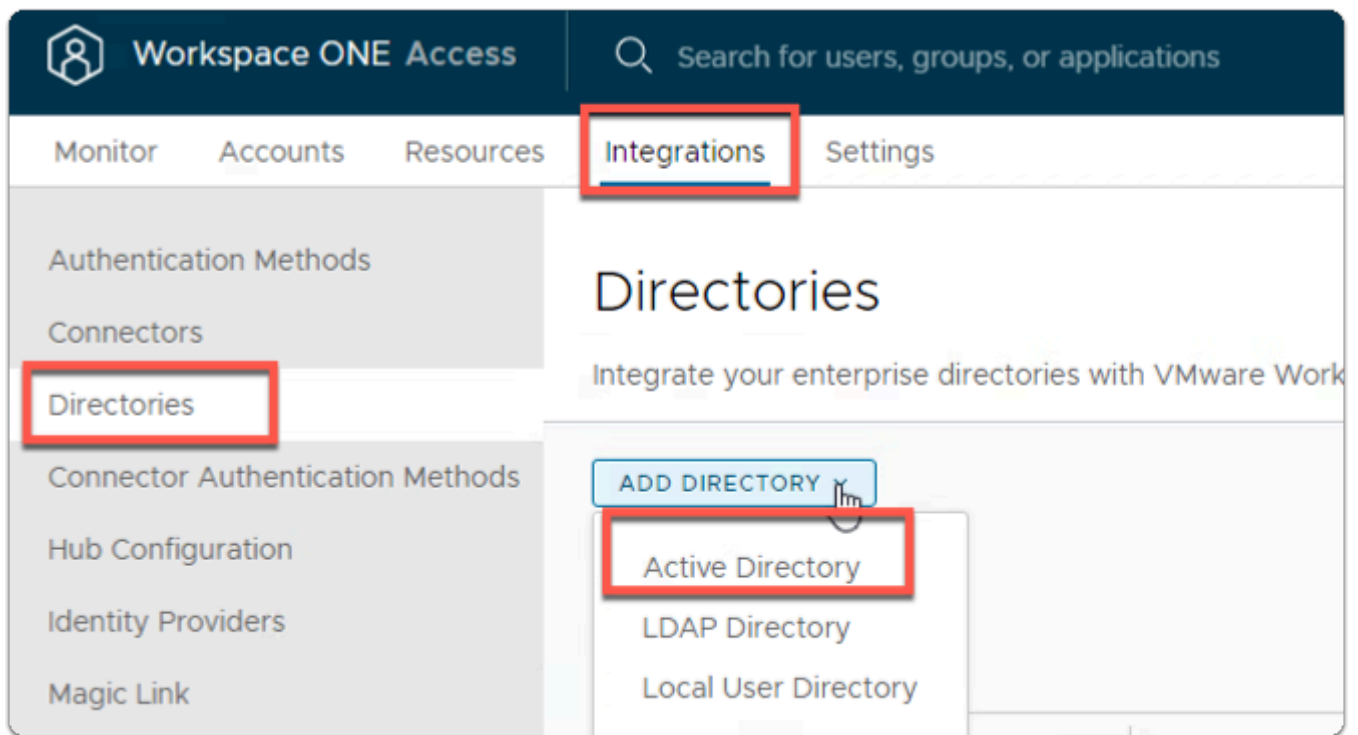
3. In the **User Attributes** console
 - Under **Name**
 - Add the following additional attributes
 - note this is case sensitive :
 - **objectGuid**
 - **sid**
 - **netBios**



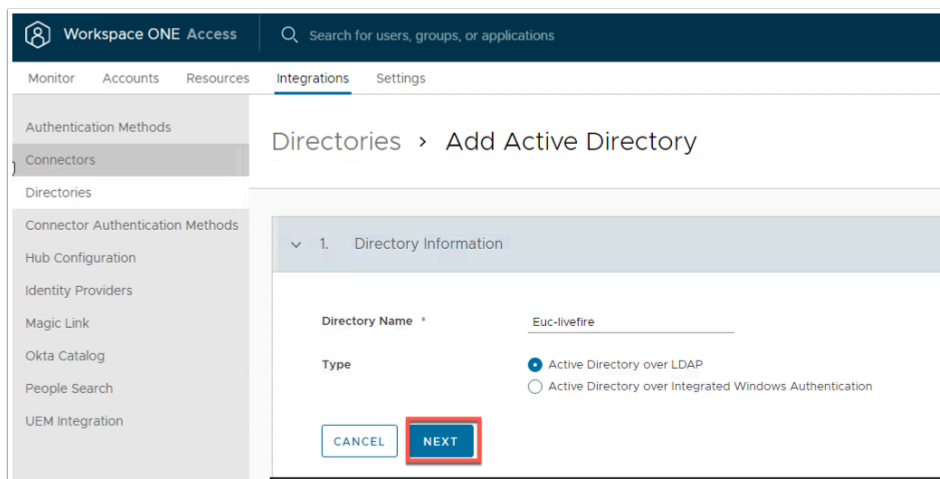
4. In the **User Attributes** console
 - Under **User Attributes**
 - Select **SAVE**



5. In the **Workspace ONE Access** admin console.
 - Select **Integrations**,
 - Select **Directories**



6. In the **Directories** area
 - To the right
 - Select **Add Directory**
 - In the **Add Directory** dropdown
 - Select **Active Directory**



7. In the **Add Active Directory** Page,
 - Under Directory Information
 - **Directory Name:** type **EUC-Livfire**
 - Ensure the **Active Directory over LDAP radio button** is selected
 - Click **NEXT**

8. In the **Configure Directory** section,
 - Leave the **Directory Sync and Authentication** as default
 - In the **Bind User Details** area
 - Enter the following Next to :
 - **Base DN:** **dc=EUC-Livefire,dc=com**
 - **Bind DN:** **cn=administrator,ou=corp,dc=EUC-Livefire,dc=com**
 - **Bind DN Password:** **VMware1!**
 - Select **Save**

9. In the **Select the Domains** page,
 - **euc-livefire.com** (EUC-LIVEFIRE)
 - Select **Save**.

| | |
|--------------------------|--------------------|
| netBios | msDS-PrincipalName |
| NickName | Custom Value |
| objectGuid | objectGUID |
| Employee organization ID | Custom Value |
| Phone | telephoneNumber |
| Profile of an user | Custom Value |
| sid | objectSid |
| Office 365 Source Anchor | objectGUID |
| userPrincipalName | userPrincipalName |

SAVE

10. On the **Map User Attribute** page

- Map the following attributes :
 - what you enter here is case sensitive
 - **Scroll down** next to:-
 - **netbios:**
 - select **custom input**
 - enter **msDS-PrincipalName**
 - **objectGuid:**
 - **from the dropdown**
 - select **objectGUID**
 - **sid:**
 - select **custom input**
 - enter **objectSid**
 - In the bottom left corner
 - select **SAVE**

i Note: userPrincipalName is a required attribute for Horizon, it is enabled by default

People Search
UEM Integration

> ✓ Map User Attributes

5. Sync groups

Select the groups you want to sync

Enter the top-level group that you would like to use as a filter. Click the Select Groups button to add groups to the list.

Sync nested group members ☒

+ ADD

Top-level group name

Give a name to the top-level group

Name dc=euc-livewire,dc=com

CANCEL ADD

11. On the **Select the Groups you want to sync** page,
 - select **+ADD**
 - under **Create Group**
 - enter **dc=euc-livewire,dc=com**
 - select **ADD**

Enter the top-level group that you would like to use as a filter. Click the Select Groups button to add groups to the list.

Sync nested group members ☒

+ ADD

| Top-level group name | Groups to sync |
|------------------------|--|
| dc=euc-livewire,dc=com | All <input checked="" type="checkbox"/> Select all SELECT |

Mapped Group Results

SAVE

12. On the **Select the Groups you want to sync** page,
- under **Select All**
 - select the **check box**
 - select **SAVE**.

6. Sync users

Select the users you want to sync

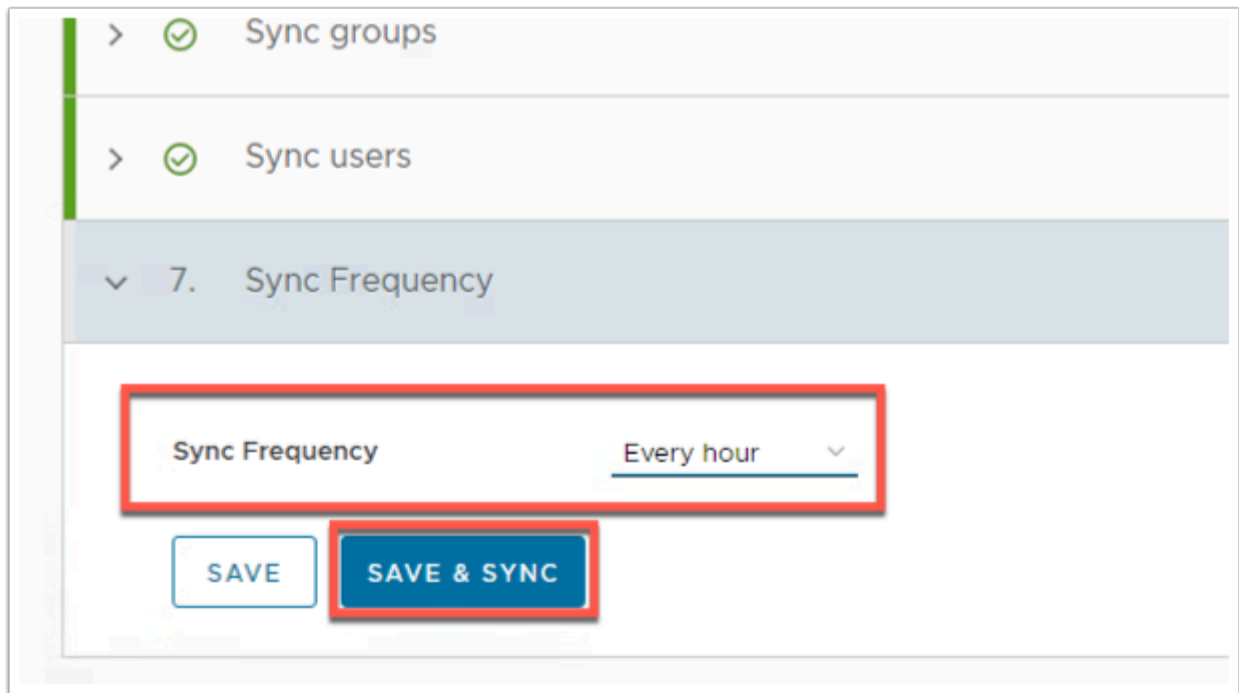
Enter the User DNs to sync, for example, CN=Users,DC=example,DC=example,com
the filter, for example, CN=Users,DC=sales,DC=example,DC=example,com;(&...)

+ ADD

Specify the user DNs

ou=corp,dc=EUC-Livefire,dc=com

13. In the **Select Users you would like to sync** window
- under **Specify the user DNs**
 - edit the existing syntax so that it reads
 - **ou=corp,dc=EUC-Livefire,dc=com**
 - select **SAVE**



14. On the **Sync Frequency** window

- next to **Sync Frequency**
 - from the **dropdown**
 - select to **Every hour**
- select **SAVE & SYNC**

| | | | | |
|------------------------|------------|--------------|----------------------------------|-------------------|
| Monitor | Accounts | Resources | Integrations | Settings |
| Authentication Methods | Connectors | Directories | Connector Authentication Methods | Hub Configuration |
| Identity Providers | Magic Link | Okta Catalog | People Search | UEM Integration |

Directories

Integrate your enterprise directories with VMware Workspace ONE Access to sync users and groups. [Learn more.](#)

[ADD DIRECTORY](#)

All Directories

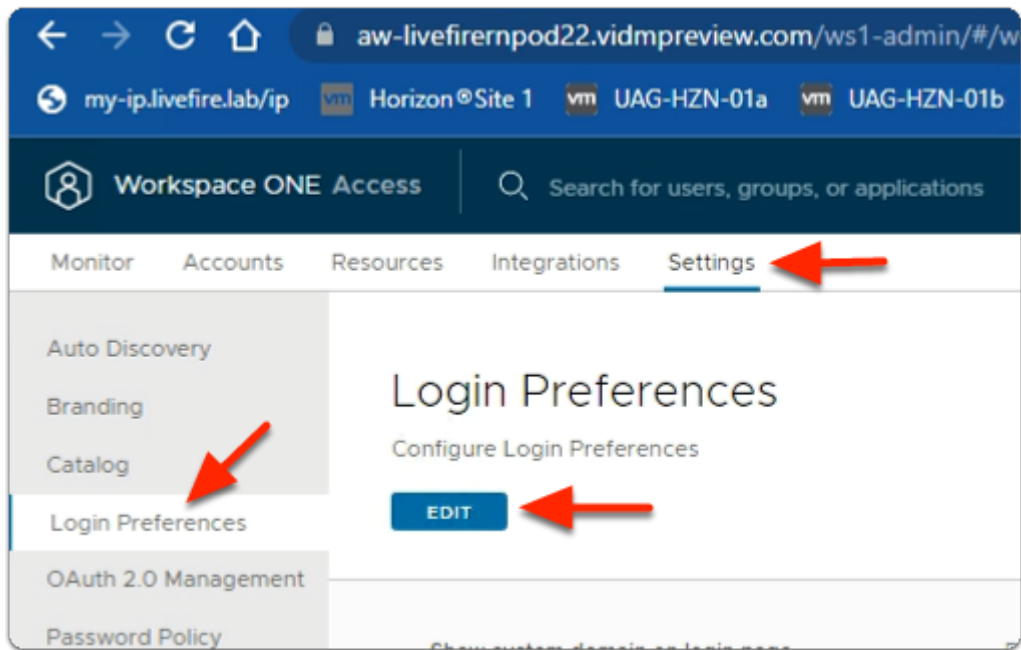
[SYNC](#)

| | Directory Name | Type | Domains | Synced Groups | Synced Users | Last Synced Attempt | Alerts |
|-----------------------|----------------------------------|----------------------------|---------|---------------|--------------|--------------------------|--------|
| <input type="radio"/> | System Directory | Local Directory | 1 | 0 | 2 | | |
| <input type="radio"/> | EUC-Livefire | Active Directory Over LDAP | 1 | 53 | 12 | Apr 13, 2023, 2:48:17 PM | 2 |

Directories per page [10](#) 2 Directories

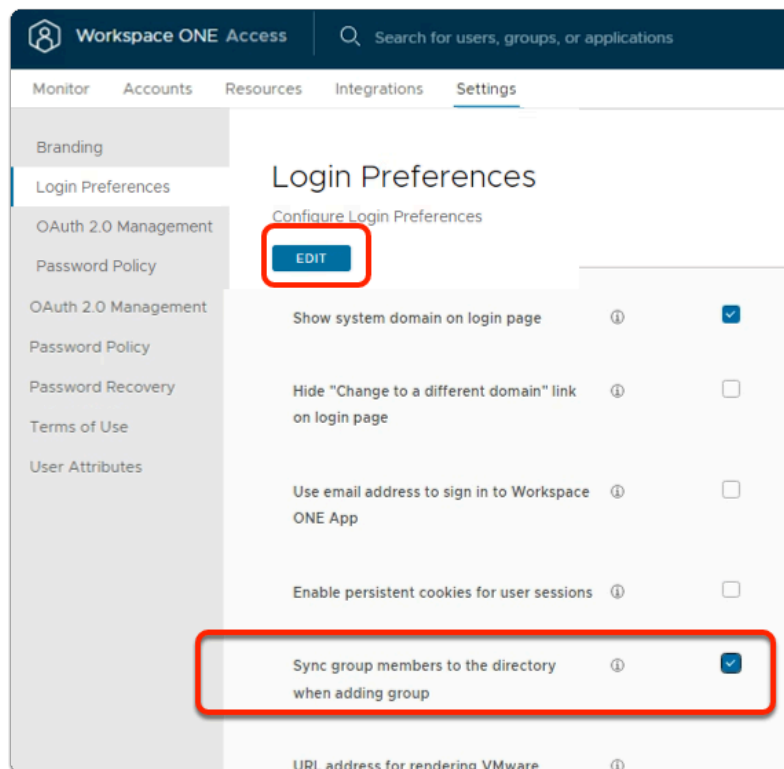
15. On the **Directories** window

- **Refresh** your browser window
 - note the **Synced Groups** and **Synced Users**



16. In your **Workspace ONE Access admin** console

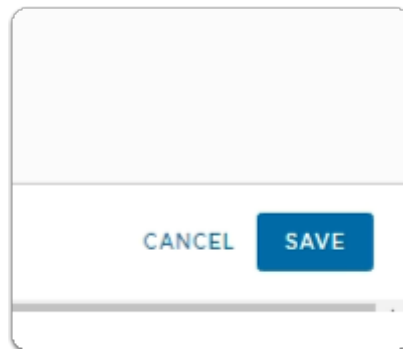
- select **Settings**
- select **Login Preferences**
- under **Login Preferences**
 - select **EDIT**



17. In the **Login Preferences** area

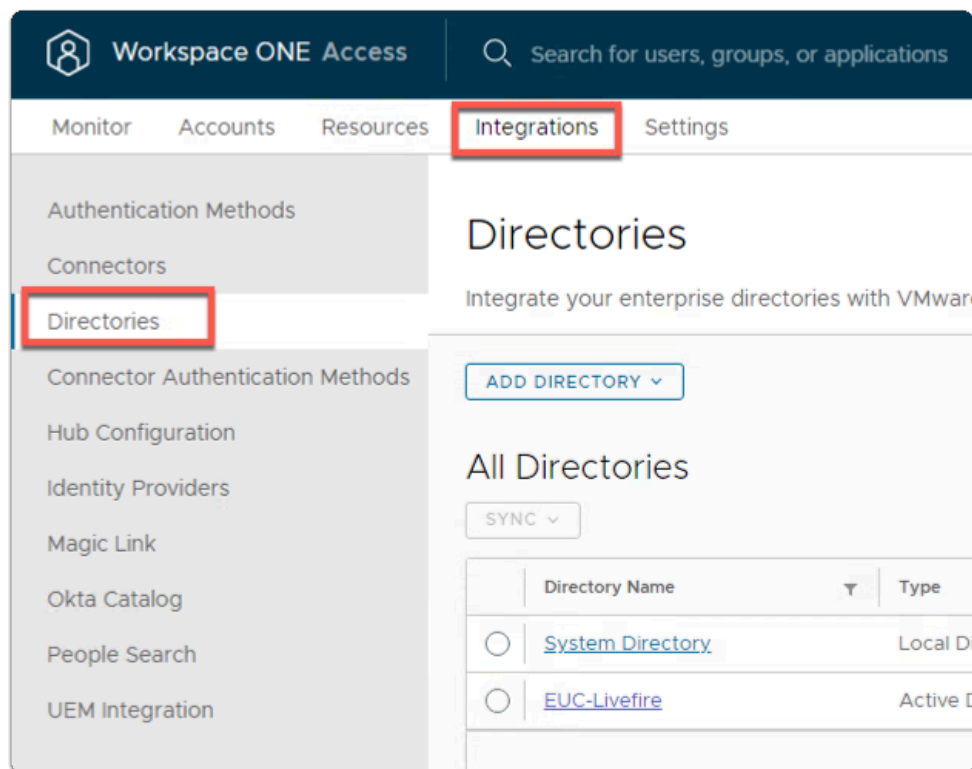
- In line with:
 - **Sync Group Members to the Directory When Adding Group**

- select the **Checkbox**



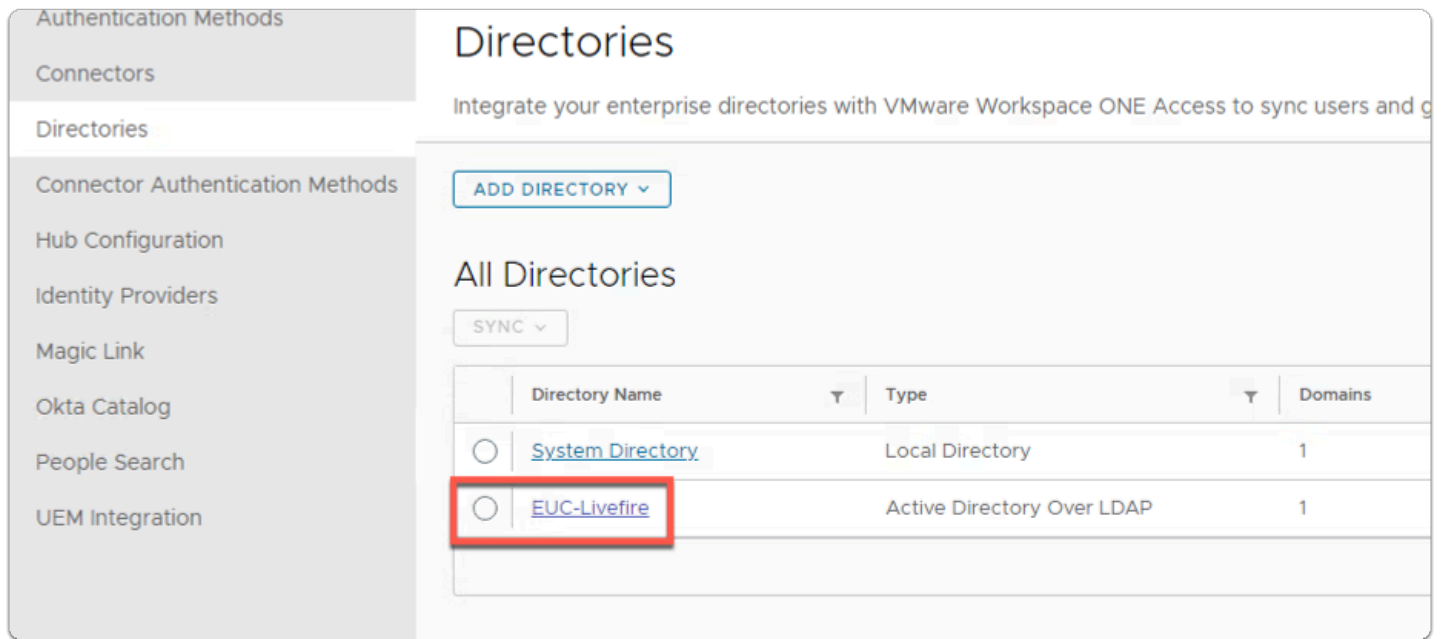
18. In the **Login Preferences** area

- in the bottom right
- select **SAVE**



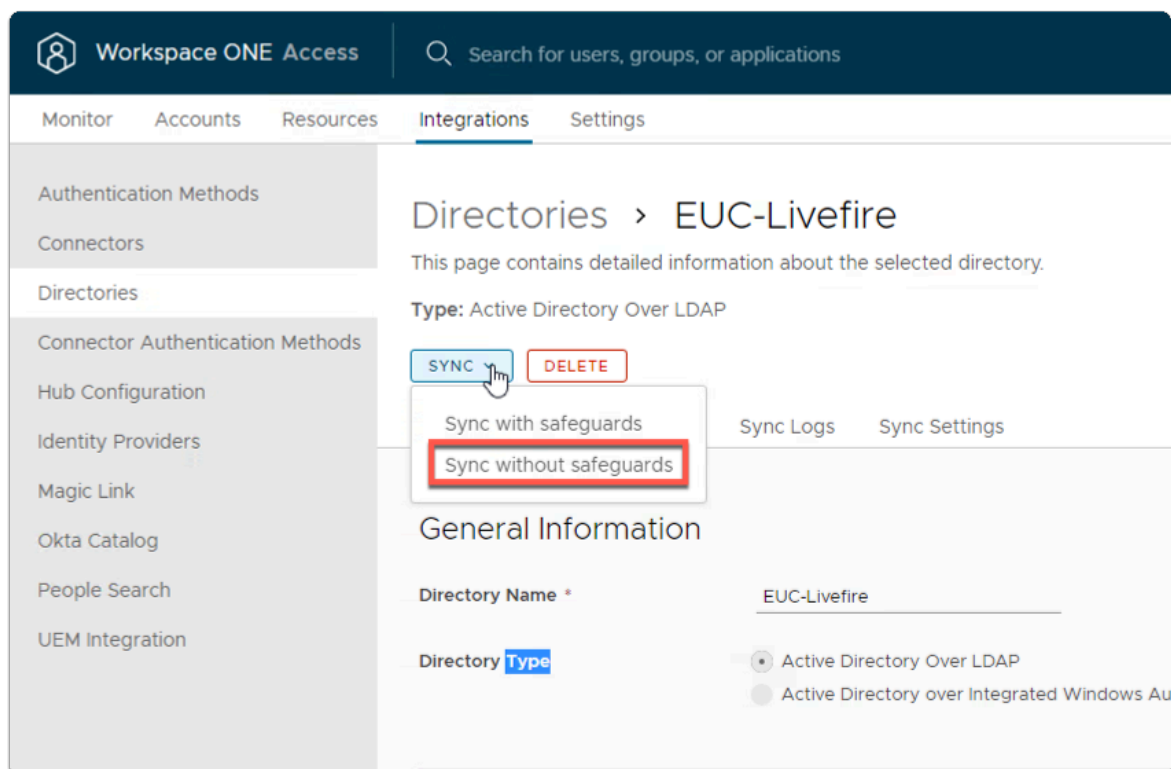
19. In the **Workspace ONE Access** console

- select **Integrations**
- select **Directories**



20. In the **Directories** area

- select **EUC-Livefire**



21. In the **EUC-Livefire** directory area

- In the right corner
 - next to **Sync**
 - select the **dropdown**
 - select **Sync without Safeguards**